

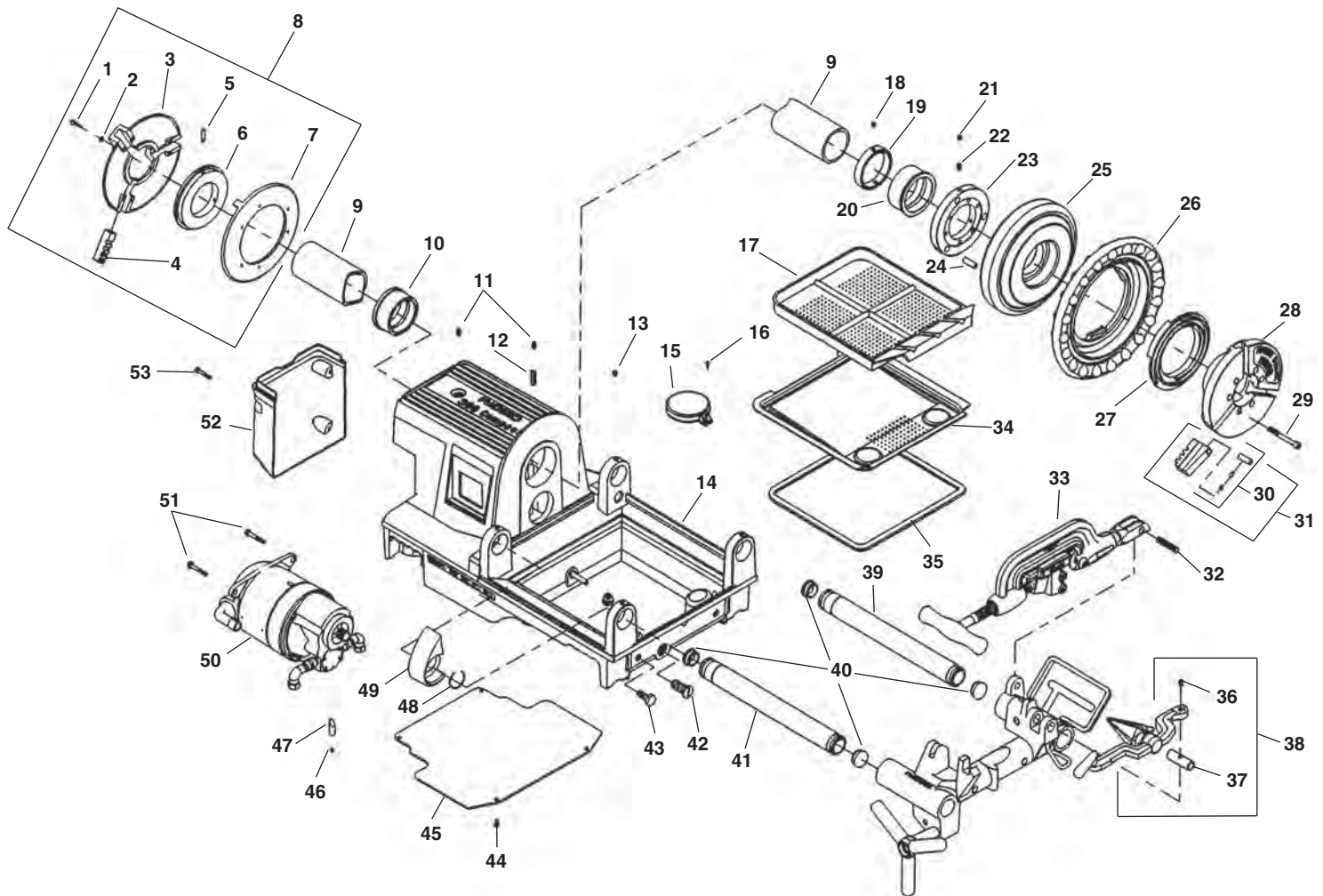


Click Here To View
Item at

www.GapPower.com

*Sales • Rentals
Parts & Service*

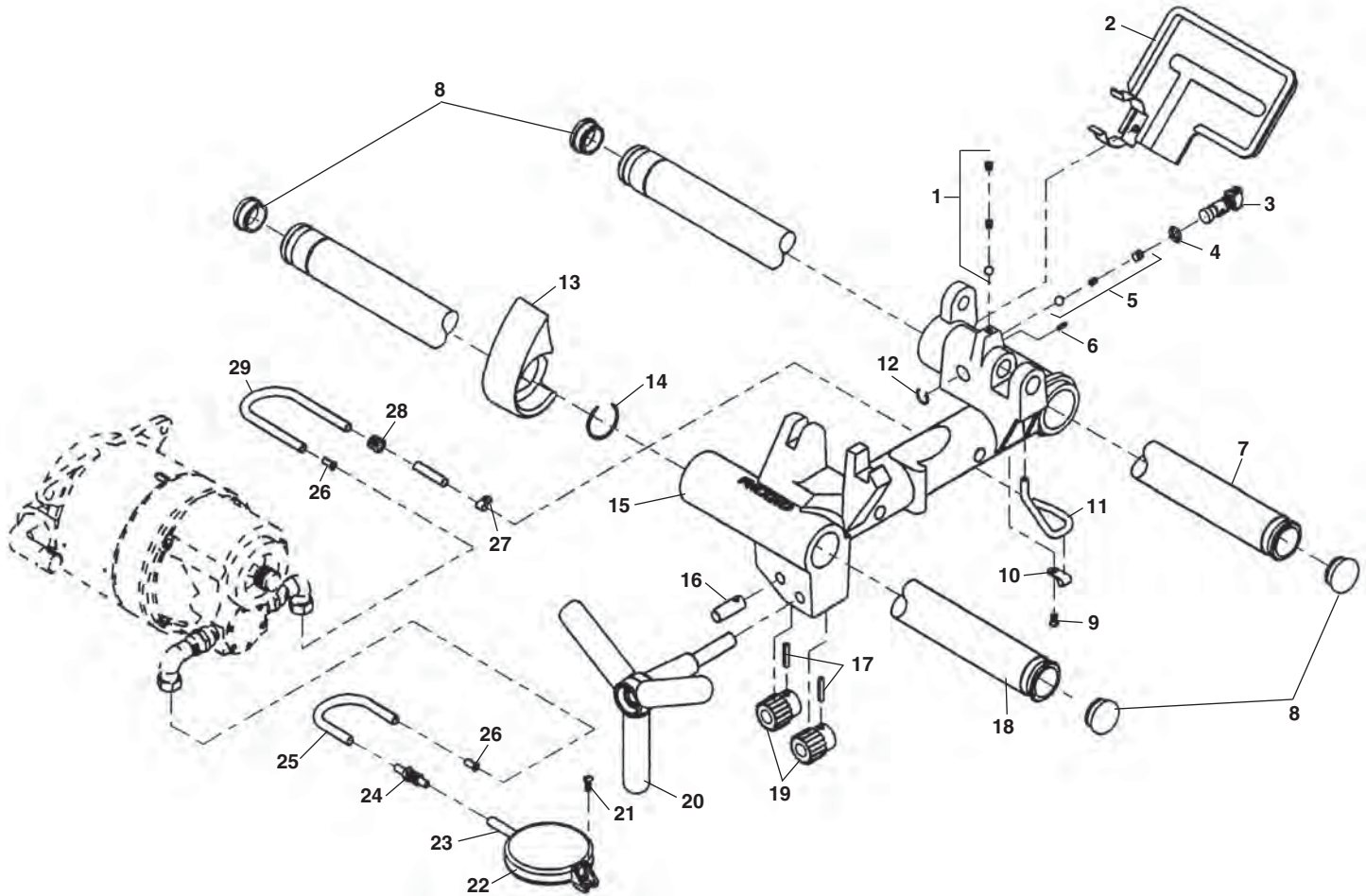
Main Drive Components



**NOTE: Order parts by Catalog Number only.
DO NOT order by Reference Number.**

| Ref. No. | Catalog No. | Description | Ref. No. | Catalog No. | Description |
|----------|-------------|----------------------------------|----------|-------------|----------------------------------|
| 1 | 46790 | Screw 12 - 24 x 3/8" (6) | 28 | 43525 | Chuck Cap |
| 2 | 40270 | Lock Washer (6) | 29 | 45295 | Screw 5/16" x 2 3/4" (6) |
| 3 | 43735 | Rear Centering Head | 30 | 44715 | Jaw Insert Set (3) |
| | 19346 | Rear Centering Head (Europe) | | 97365 | Jaw Insert Set f/Coated Pipe (3) |
| 4 | 46500 | Rear Jaw | 31 | 44090 | Chuck Jaw Set |
| 5 | 45260 | Step Pin | 32 | 45520 | Hinge Pin |
| 6 | 44095 | Scroll | 33 | 42370 | 360 Cutter Complete |
| 7 | 43740 | Back Plate | 34 | 54052 | Oil Pan Liner |
| | 19356 | Back Plate (Europe) | 35 | 75632 | Oil Pan Liner Gasket |
| 8 | 44165 | Rear Centering Assembly | 36 | 36262 | Shoulder Screw |
| 9 | 44100 | Drive Shaft | 37 | 36267 | Pivot Pin |
| 10 | 45335 | Rear Bearing | 38 | 34612 | 344 Reamer |
| 11 | 46860 | Grease Fitting (2) | 39 | 54112 | Rear Rail |
| 12 | 45310 | Pin Split Roll | 40 | 35162 | Rail Plug (4) |
| 13 | 60025 | Set Screw 5/16" - 18 (4) | 41 | 54117 | Front Rail |
| 14 | 54522 | Base Export | 42 | 54302 | Drain Plug |
| | 76342 | Base N.A. | 43 | 54042 | M10-1.5 Hex Hd. Cap Screw |
| 15 | 58467 | Filter Screen Assembly | 44 | 87730 | Screw 1/4" x 3/8" (4) |
| 16 | 45420 | Screw 10 - 24 x 3/8" | 45 | 61937 | Bottom Cover |
| 17 | 54047 | Chip Tray | 46 | 77905 | Set Screw 5/16" x 1/4" |
| 18 | 33785 | Set Screw 5/16" x 24 x 5/16" (3) | 47 | 54037 | Motor Wedge |
| 19 | 45345 | Thrust Ring | 48 | 87620 | Retaining Ring |
| 20 | 54502 | Front Bearing | 49 | 54507 | Carriage Stop |
| 21 | 45300 | Set Screw 5/16" x 24 x 1/4" (3) | 50 | 54797 | Model 2192, 115V |
| 22 | 45265 | Set Screw 5/16" x 24 x 1/2" (3) | | 54802 | Model 2292R, 230V |
| 23 | 30027 | Drive Ring | | 74182 | Model 2199R, 115V, 52 RPM |
| 24 | 30022 | Drive Pin (3) | 51 | 85915 | Motor Mounting Bolt (2) |
| 25 | 30017 | Ring Gear | 52 | 61932 | Motor Cover |
| 26 | 89150 | Hand Wheel | 53 | 54532 | Motor Cover Screw (4) |
| 27 | 43540 | Chuck Scroll | | | |

Carriage and Oil System

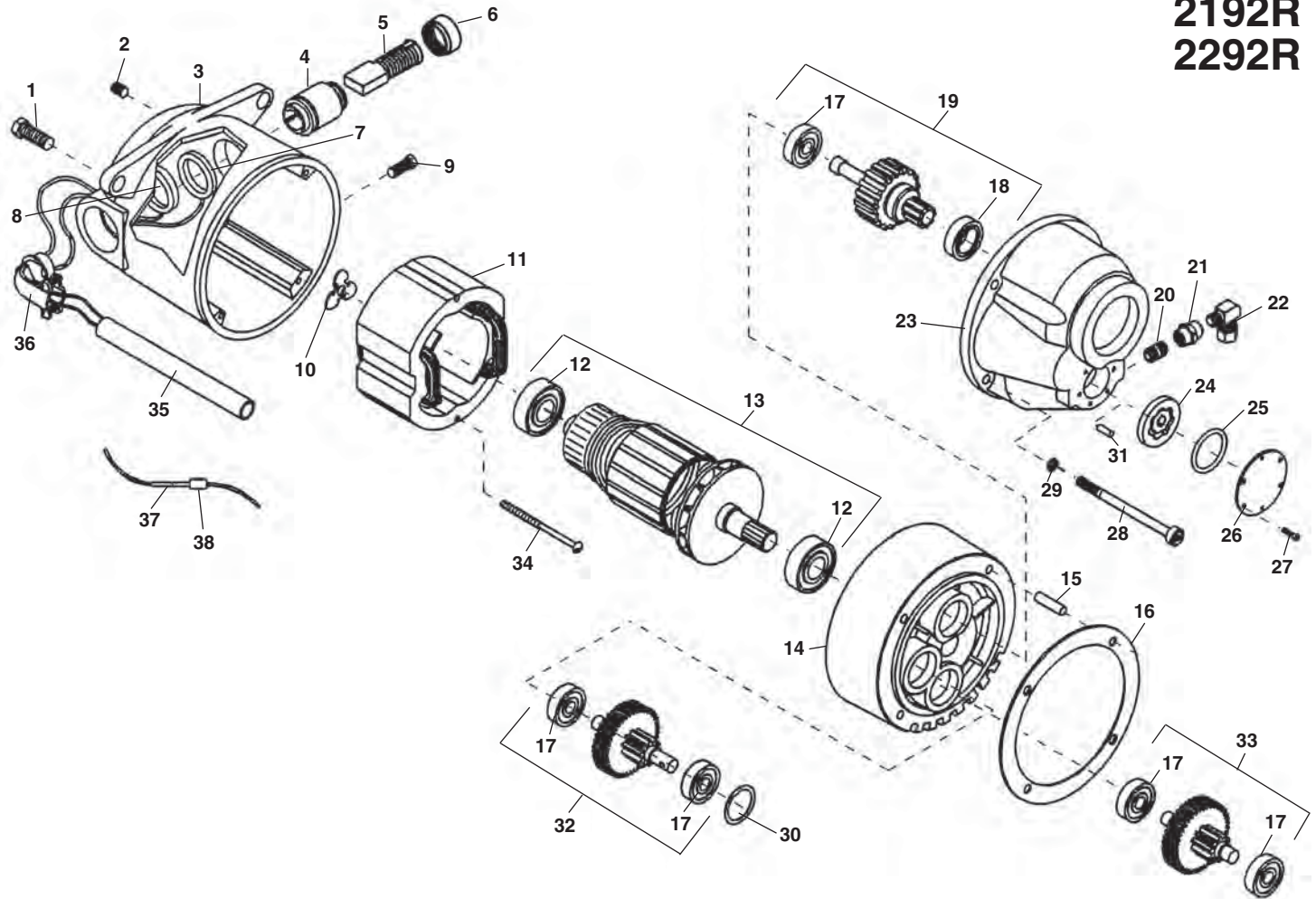


**NOTE: Order parts by Catalog Number only.
DO NOT order by Reference Number.**

| Ref. No. | Catalog No. | Description |
|----------|-------------|-------------------------|
| 1 | 46810 | Detente Assembly |
| 2 | 54517 | Drip Pan |
| 3 | 54097 | Spool Valve |
| 4 | 54102 | O-Ring |
| 5 | 35307 | Oil Pressure Relief Set |
| 6 | 58417 | Roll Pin 1/8" x 3/8" |
| 7 | 54112 | Rear Rail |
| 8 | 35162 | Rail Plug (4) |
| 9 | 79965 | Screw 10 - 32 x 1/2" |
| 10 | 35062 | Oil Line Clamp |
| 11 | 35067 | Oil Tube |
| 12 | 54107 | Retaining Ring |
| 13 | 54507 | Carriage Stop |
| 14 | 87620 | Retaining Ring |
| 15 | 54512 | Carriage |
| 16 | 35187 | Pinion Idler Shaft |
| | 54122 | Cap Plug (not shown) |
| 17 | 34342 | Roll Pin |
| 18 | 54117 | Front Rail |
| 19 | 59092 | Pinion |
| 20 | 35182 | Hand Wheel |
| 21 | 45420 | Screw 10 - 24 x 3/8" |
| 22 | 58467 | Filter Screen Assembly |
| 23 | 61897 | Oil Filter Tube |
| 24 | 54142 | Bulkhead Fitting |
| 25 | 54152 | Oil Intake Line |
| 26 | 35117 | Oil Line Insert |
| 27 | 35142 | Hose Clamp |
| 28 | 47080 | Oil Line Grommet |
| 29 | 61282 | Carriage Oil Line |

Motor

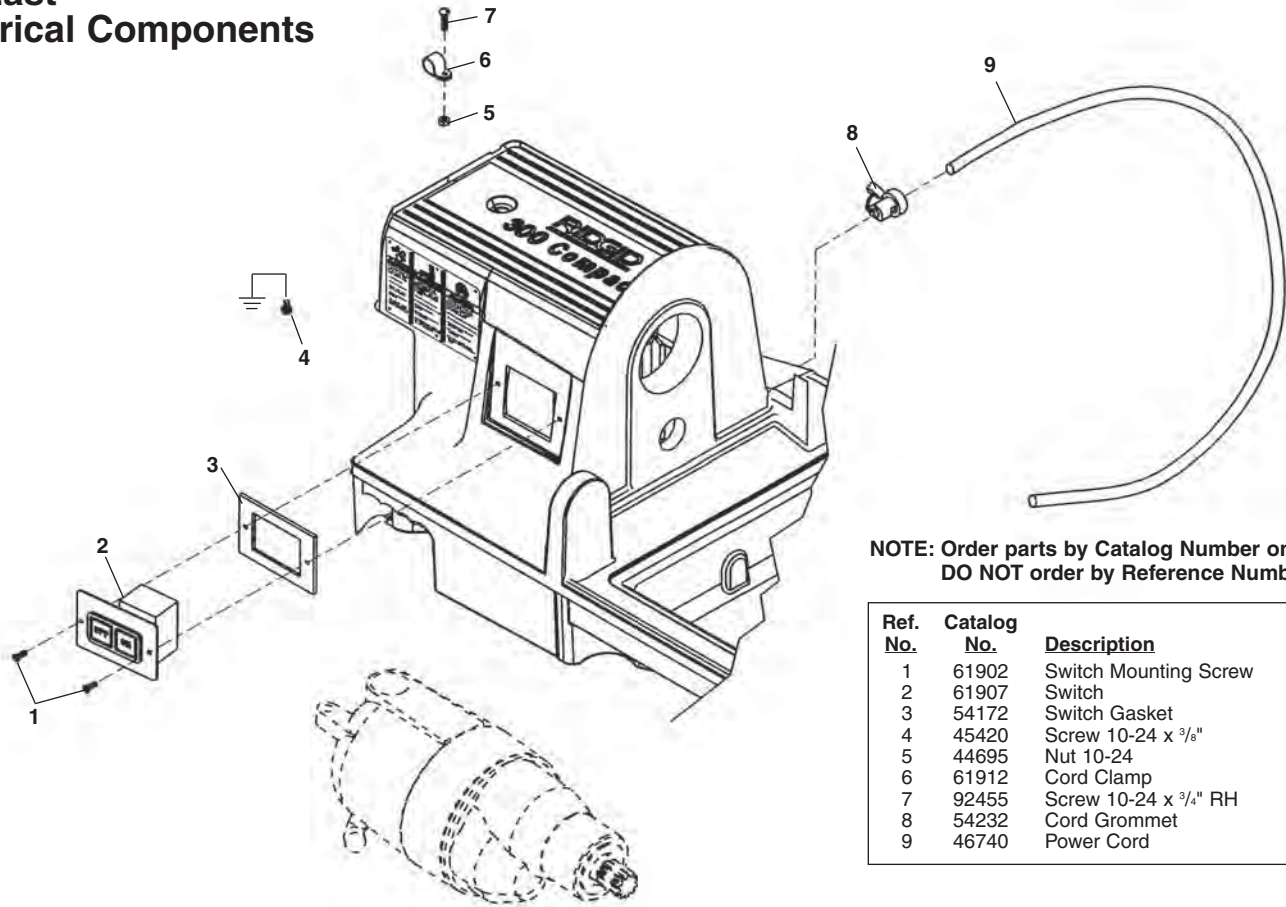
**2192
2292
2192R
2292R**



**NOTE: Order parts by Catalog Number only.
DO NOT order by Reference Number.**

| Ref. No. | Catalog No. | Description | Ref. No. | Catalog No. | Description | Ref. No. | Catalog No. | Description |
|----------|-------------|--------------------------------|----------|-------------|-------------------------------|----------|-------------|-----------------------|
| — | 72127 | Motor Model 2292, 230V | 12 | 44565 | Armature Bearing (2) | 26 | 96840 | Cover Plate |
| — | 54797 | Motor Model 2192R, 115V | 13 | 52497 | 115V Armature | 27 | 96890 | Screw #4 x 3/8" (6) |
| — | 54802 | Motor Model 2292R, 230V | | 54542 | 230V Armature | 28 | 45075 | Screw 1/4" - 20 |
| 1 | 85915 | Motor Mounting Bolt (2) | 14 | 54552 | Fan Housing Assembly | 29 | 45150 | Lock Washer 1/4" |
| 2 | 39770 | Set Screw 1/4" - 20 x 1/4" (2) | 15 | 45165 | Dowel Pin | 30 | 96880 | Oil Seal |
| 3 | 52482 | Motor Housing | 16 | 52502 | Gasket | 31 | 96885 | Pin |
| 4 | 45025 | Brush Holder Set (2) | 17 | 44760 | Gear Bearing | 32 | 52522 | 1st Gear Assembly |
| 5 | 44540 | Brush Assembly Set (2) | 18 | 45315 | Front Bearing | 33 | 54547 | 2nd Gear Assembly |
| 6 | 44545 | Brush Cap Set (2) | 19 | 54537 | Main Drive Gear Assembly | 34 | 44555 | Screw 10 - 24 x 3" |
| 7 | 86685 | Red Brush Lead | 20 | 52507 | 1/8" NPT Close Nipple (2) | 35 | 63382 | Plastic Tube |
| 8 | 86680 | White Brush Lead | 21 | 52512 | 1/8" Coupling (2) | 36 | 46900 | 90 Connector |
| 9 | 83500 | Field Locking Screw | 22 | 52517 | Elbow Compression Fitting (2) | — | 47412 | Male Wire Connector |
| 10 | 44580 | Loading Spring | 23 | 96830 | Gear Case | — | 52537 | Female Wire Connector |
| 11 | 44015 | Field 100/115V | 24 | 96870 | Gerotor Set | 37 | 16946 | Male Connector |
| | 44035 | Field 230V | 25 | 96875 | "O" Ring | 38 | 16956 | Female Connector |

Far East Electrical Components

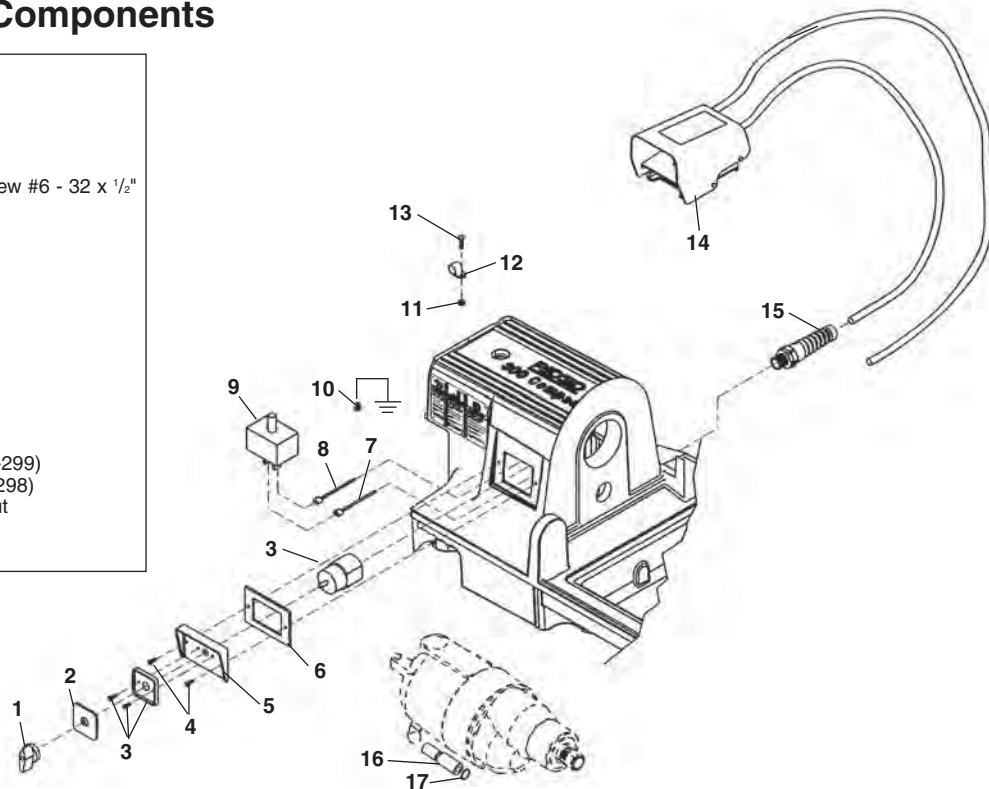


**NOTE: Order parts by Catalog Number only.
DO NOT order by Reference Number.**

| Ref. No. | Catalog No. | Description |
|----------|-------------|-----------------------|
| 1 | 61902 | Switch Mounting Screw |
| 2 | 61907 | Switch |
| 3 | 54172 | Switch Gasket |
| 4 | 45420 | Screw 10-24 x 3/8" |
| 5 | 44695 | Nut 10-24 |
| 6 | 61912 | Cord Clamp |
| 7 | 92455 | Screw 10-24 x 3/4" RH |
| 8 | 54232 | Cord Grommet |
| 9 | 46740 | Power Cord |

European Electrical Components

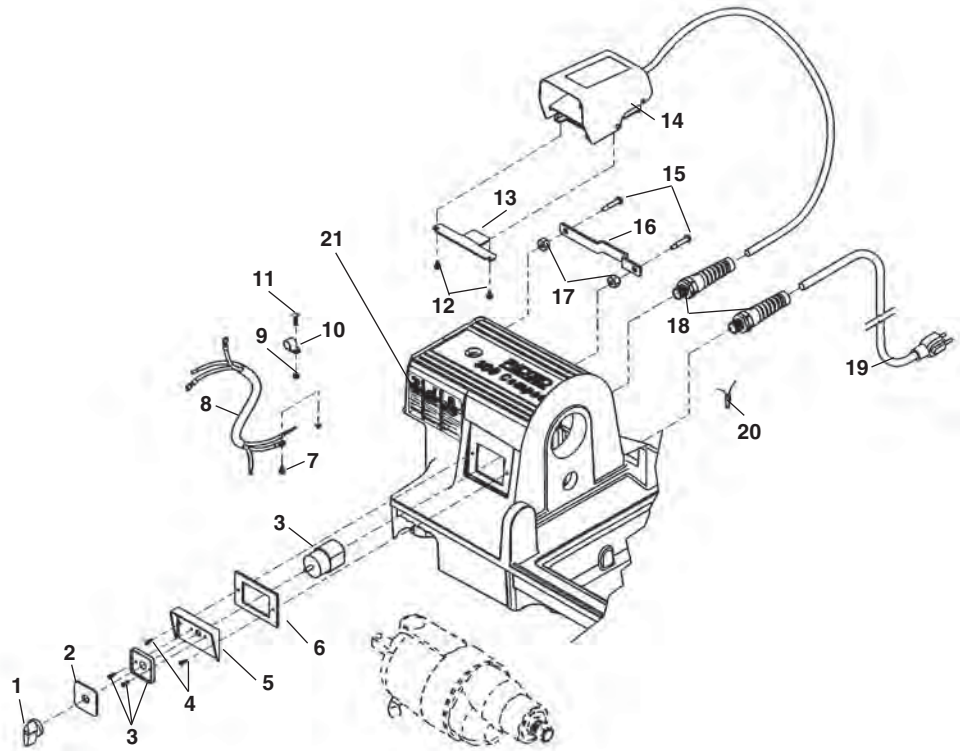
| Ref. No. | Catalog No. | Description |
|----------|-------------|---------------------------------------|
| 1 | 61397 | Switch Knob |
| 2 | 54167 | Switch Face Plate |
| 3 | 54157 | Switch & Screws |
| 4 | 61902 | Slotted Pan Head Screw #6 - 32 x 1/2" |
| 5 | 61917 | Switch Plate |
| 6 | 54172 | Switch Gasket |
| 7 | 63387 | Brown Wire |
| 8 | 63392 | Blue Wire |
| 9 | 63372 | Suppressor |
| — | 63387 | Brown Lead Wire |
| — | 63392 | Blue Lead Wire |
| 10 | 45420 | Screw 10-24 x 3/8" |
| 11 | 44695 | Nut 10-24 |
| 12 | 61912 | Cord Clamp |
| 13 | 92455 | Screw 10-24 x 3/4" RH |
| 14 | 36652 | Foot Switch (B-296) |
| | 40022 | Foot Switch f/Aust. (B-299) |
| | 40017 | Foot Switch f/U.K. (B-298) |
| 15 | 46730 | Strain Relief w/Locknut |
| 16 | 63377 | Ferrite Bead |
| 17 | 43552 | Cable Tie |



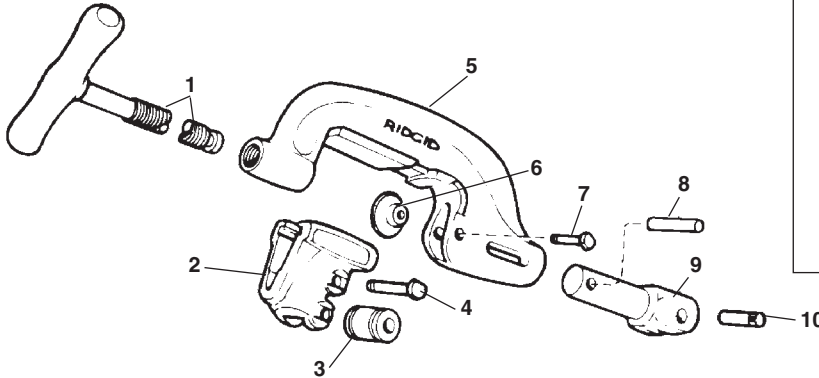
120V 60Hz Electrical

**NOTE: Order parts by Catalog Number only.
DO NOT order by Reference Number.**

| Ref. No. | Catalog No. | Description |
|----------|-------------|----------------------------|
| 1 | 61397 | Switch Knob |
| 2 | 61967 | Switch Face Plate |
| 3 | 54157 | Switch Assembly |
| 4 | 54162 | Screw (2) |
| 5 | 61917 | Switch Plate |
| 6 | 54172 | Gasket |
| 7 | 45420 | Screw #10 - 24 x 3/8" |
| 8 | 72132 | Connecting Cord |
| 9 | 44695 | Hex Nut #10 - 24 |
| 10 | 61912 | Cord Retainer |
| 11 | 92455 | Screw #10 - 24 x 3/4" |
| 12 | 54357 | Screw 3/16" - 18 (2) |
| 13 | 58602 | Foot Switch Hook |
| 14 | 36642 | B-294 Foot Switch |
| 15 | 54137 | Screw (2) |
| 16 | 58267 | Foot Switch Hanger Bracket |
| 17 | 96730 | Hex Nut 5/16" - 18 |
| 18 | 72107 | Strain Relief |
| 19 | 46740 | Power Cord |
| 20 | 44635 | End Splice Connector |
| 21 | 78367 | Warning Plate |



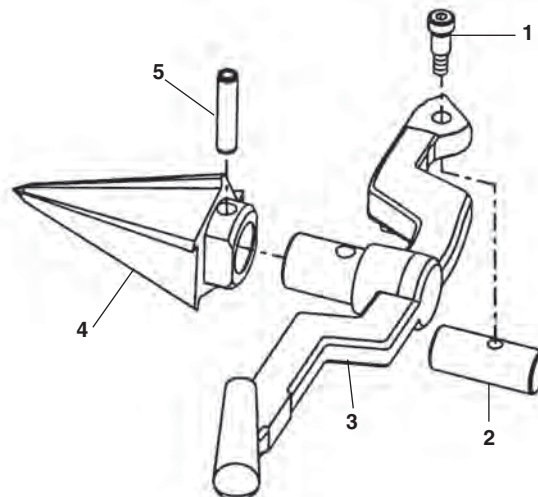
No. 360 Cutter



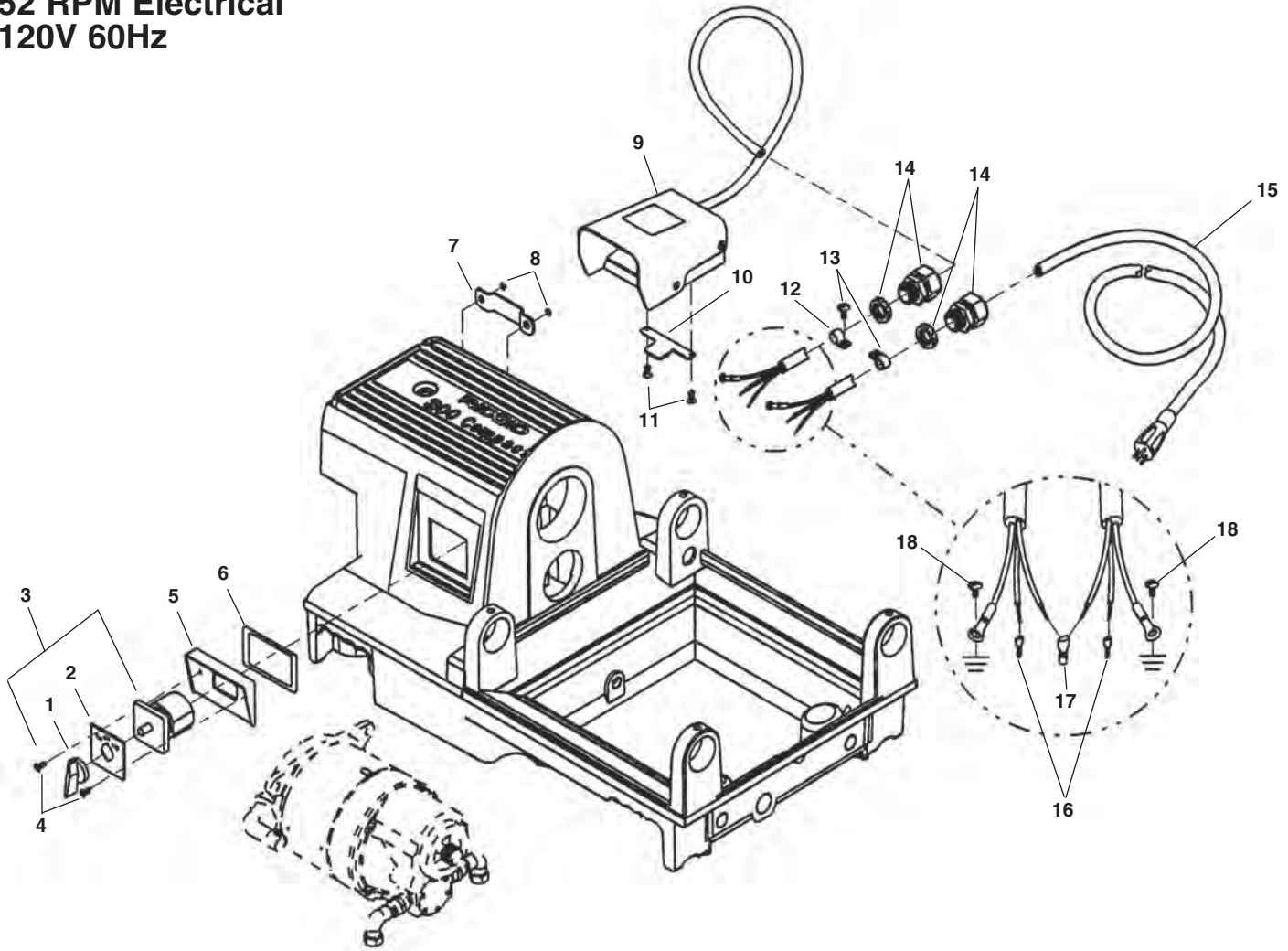
| Ref. No. | Catalog No. | Description |
|----------|-------------|-----------------------|
| — | 42370 | 360 Cutter Complete |
| 1 | 43625 | Screw Handle |
| 2 | 33400 | Roll Housing Assembly |
| 3 | 34305 | Roll (2) |
| 4 | 34310 | Roll Pin (2) |
| 5 | 43595 | Cutter Frame |
| 6 | 33100 | Cutter Wheel Thin |
| | 33105 | Cutter Wheel H.D. |
| | 44185 | Cutter Wheel Std. |
| 7 | 34780 | Wheel Pin |
| 8 | 45435 | Retaining Pin |
| 9 | 45505 | Support Arm |
| 10 | 45520 | Pin |

No. 344 Reamer

| Ref. No. | Catalog No. | Description |
|----------|-------------|---------------------|
| — | 34612 | 344 Reamer Complete |
| 1 | 36262 | Shoulder Screw |
| 2 | 36267 | Pivot Pin |
| 3 | 36272 | Reamer Arm |
| 4 | 36277 | Reamer Cone |
| 5 | 35355 | Split Roll Pin |



52 RPM Electrical
120V 60Hz



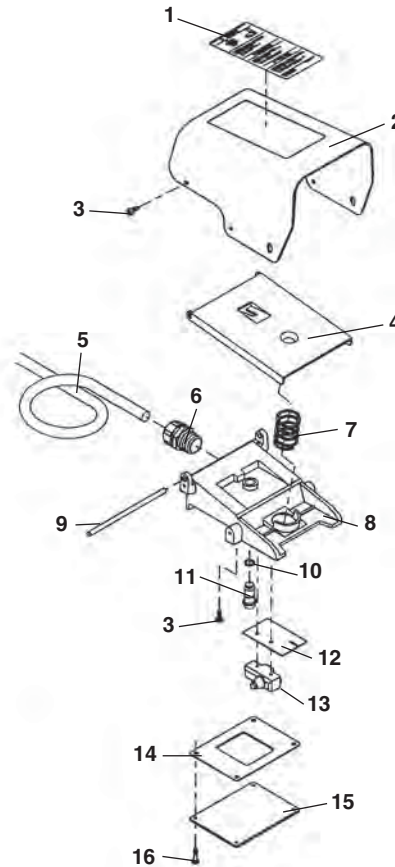
**NOTE: Order parts by Catalog Number only.
DO NOT order by Reference Number.**

| Ref. No. | Catalog No. | Description | Ref. No. | Catalog No. | Description |
|----------|-------------|----------------------------|----------|-------------|------------------------------------------|
| 1 | 61397 | Switch Knob | 10 | 58602 | Foot Switch Hook |
| 2 | 61967 | Switch Face Plate | 11 | 54357 | Screw $\frac{5}{16}$ " - 18 (2) |
| 3 | 54157 | Switch Assembly | 12 | 75937 | Cable Clamp (2) |
| 4 | 54162 | Screw (2) | 13 | 92455 | Screw #10-24 x $\frac{3}{4}$ " |
| 5 | 61917 | Switch Plate | 14 | 75952 | Strain Relief with Nut |
| 6 | 54172 | Gasket | 15 | 75902 | Power Cord |
| 7 | 58267 | Foot Switch Hanger Bracket | 16 | 76347 | Wire Terminals (6) |
| 8 | 54137 | Screw (2) | 17 | 44635 | Wire End Splice |
| 9 | 75962 | B294 HD Foot Switch | 18 | 45420 | Grand Screw #10-24 x $\frac{3}{8}$ " (2) |

**NOTE: Order parts by Catalog Number only.
DO NOT order by Reference Number.**

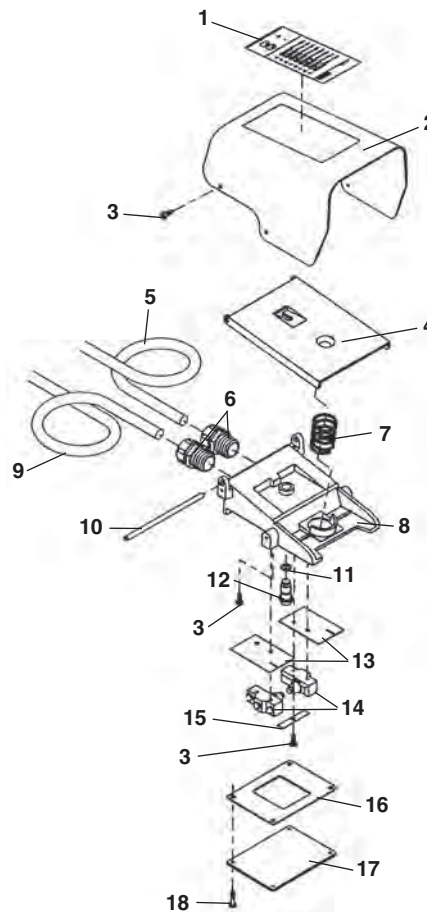
**B-294
B-295
301-A
B-294 HD**

| Ref. No. | Catalog No. | Description |
|----------|-------------|----------------------------|
| — | 36642 | B-294 Foot Switch |
| — | 36647 | B-295 Foot Switch |
| — | 36662 | 301-A Foot Switch |
| — | 75962 | B-294 HD Foot Switch |
| 1 | 36667 | Warning Label (B-294) |
| | 36672 | Warning Label (B-295) |
| | 36687 | Warning Label (301-A) |
| | 76352 | Warning Label (B-294 HD) |
| 2 | 36692 | Cover |
| 3 | 36787 | Screw #10 Self-tapping (5) |
| 4 | 36697 | Foot Pedal |
| 5 | 68880 | Cord (B-294) |
| | 36712 | Cord (B-295) |
| | 36727 | Cord (301-A) |
| | 75972 | Cord (B-294 HD) |
| 6 | 36732 | Cord Connector |
| | 75977 | Cord Connector (B-294 HD) |
| 7 | 36702 | Spring |
| 8 | 54347 | Base |
| 9 | 36747 | Pivot Pin |
| 10 | 36767 | O-Ring |
| 11 | 36772 | Poppet |
| 12 | 54367 | Insulator |
| 13 | 36762 | Micro Switch |
| 14 | 54372 | Seal |
| 15 | 54362 | Bottom Cover |
| 16 | 54357 | Bottom Cover Screw (4) |

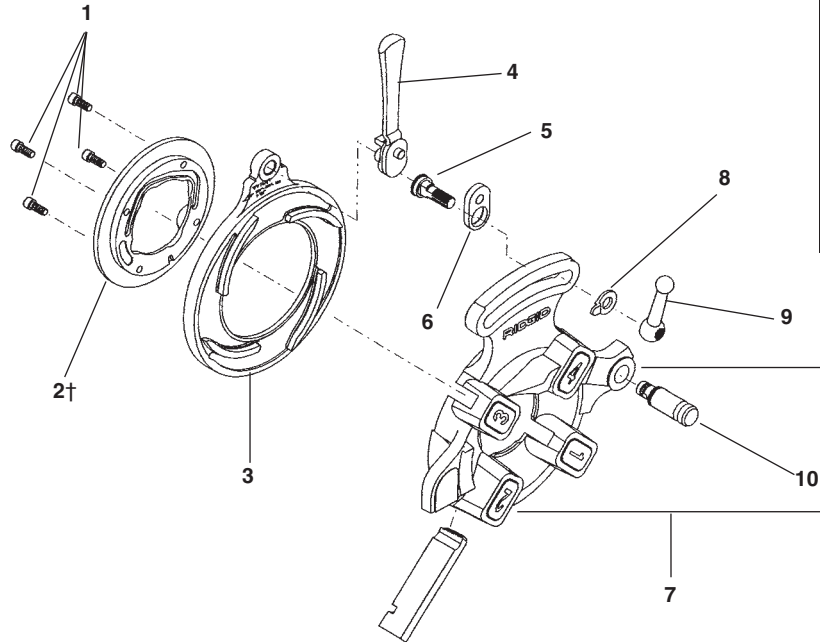


**B-296
B-297
B-298
B-299**

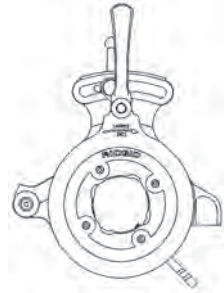
| Ref. No. | Catalog No. | Description |
|----------|-------------|-------------------------------|
| — | 36652 | B-296 Foot Switch |
| — | 36657 | B-297 Foot Switch |
| — | 40017 | B-298 Foot Switch (U.K.) |
| — | 40022 | B-299 Foot Switch (Australia) |
| 1 | 36677 | Warning Label (B-296) |
| | 36682 | Warning Label (B-297) |
| | 54392 | Warning Label (B-298) |
| | 45017 | Warning Label (B-299) |
| 2 | 54382 | Cover |
| 3 | 36787 | Screw #10 Self-tapping (6) |
| 4 | 36697 | Foot Pedal |
| 5 | 36717 | Cord (B-299) |
| | 18906 | Cord (B-296) |
| | 36722 | Cord (B-297) |
| | 45027 | Cord (B-298) |
| 6 | 36732 | Cord Connector (2) |
| 7 | 36702 | Spring |
| 8 | 54352 | Base |
| 9 | 18916 | Line Cord (B-296) |
| | 36797 | Line Cord (B-297) |
| | 45022 | Line Cord (B-298) |
| | 93210 | Line Cord (B-299) |
| 10 | 36747 | Pivot Pin |
| 11 | 36767 | O-Ring |
| 12 | 36772 | Poppet |
| 13 | 54367 | Insulator (2) |
| 14 | 36762 | Micro Switch (2) |
| 15 | 54377 | Switch Bracket |
| 16 | 54372 | Seal |
| 17 | 54362 | Bottom Cover |
| 18 | 54357 | Bottom Cover Screw (4) |



**811A
842
555
531B
532B
500A MONO**



Service Note



†2 Retaining Ring must be oriented as shown for proper oil flow.

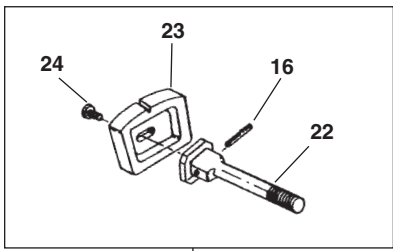
QUICK OPENING DIE HEADS

**NOTE: Order parts by Catalog Number only.
DO NOT order by Reference Number.**

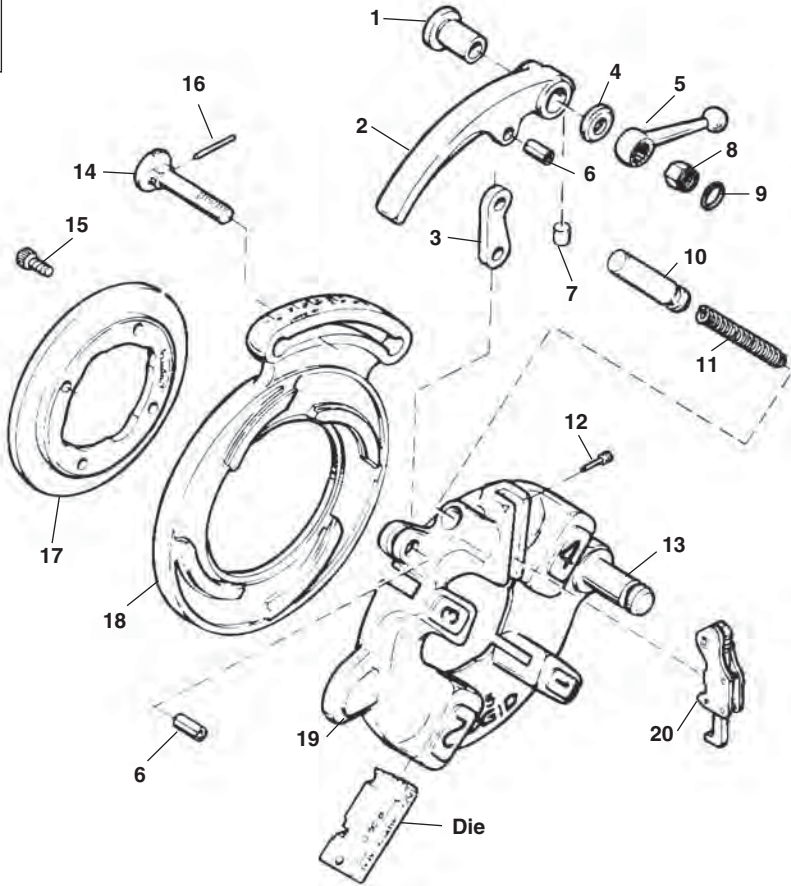
| Ref. No. | 1 | 2† | 3 | 4 | 5 | 6 | 7 | 8 | 9 | 10 |
|--------------------------------------------------------------------------|-------|----------------------------------------|-----------|-----------------|------------|-------|-------------|--------------|-------------|-------|
| Die Head & Catalog No. | Screw | Retaining Ring | Cam Plate | Throw-Out Lever | Lock Screw | Link | Head/w Post | Lever Washer | Clamp Lever | Post |
| 811A (97065) 1/8"-2" RH NPT | 32205 | 97020 | 43360 | 46520 | 39860 | 39950 | 40922 | 26957 | 39970 | 59832 |
| 842 (23282) 1/8"-2" LH NPT | 32205 | 23292 | 43360 | 46520 | 39860 | 39950 | 23287 | 26957 | 39970 | 59832 |
| 555 (10491) 1/8"-3/4" | 32205 | 24256 | 43365 | 46555 | 39860 | 39950 | 24006 | 26957 | 39970 | 59832 |
| 531B (97045) 1/4"-1" RH/LH | 32205 | 46620 | 43405 | 46555 | 39955 | 39950 | 97055 | 26957 | 39970 | 59832 |
| 532B (97050) 1 1/8"-2" RH/LH | 32205 | 46625 | 43410 | 46555 | 39955 | 39950 | 97060 | 26957 | 39970 | 59832 |
| 811A (97070) 1/8"-2" BSPT | 32205 | 97020 | 43360 | 46520 | 39860 | 39950 | 40957 | 26957 | 39970 | 59832 |
| 842 (23297) 1/8"-2" LH (BSPT) | 32205 | 23292 | 43360 | 46520 | 39860 | 39950 | 23202 | 26957 | 39970 | 59832 |
| 500A Mono (1/8"-3/8") RH 1/8" (41032) 1/4" (41037) 3/8" (41042) | 32205 | 1/8"-41862 1/4"-41867 3/8"-41872 | 43305 | 46555 | 47140 | 39950 | 41907 | 26957 | 46820* | 59832 |
| 500A Mono (1/2"-3/4") RH 1/2" (41047) 3/4" (41062) | 32205 | 1/2"-41877 3/4"-41882 | 43300 | 46555 | 47140 | 39950 | 41912 | 26957 | 46820* | 59832 |
| 500A Mono (1"-1 1/4") RH 1" (41057) 1 1/4" (41062) | 32205 | 1"-41887 1 1/4"-41892 | 43295 | 46555 | 47140 | 39950 | 41917 | 26957 | 46820* | 59832 |
| 500A Mono (1 1/2"-2") RH 1 1/2" (41067) 2" (41072) | 32205 | 1 1/2"-41897 2"-41902 | 43290 | 46555 | 47140 | 39950 | 41922 | 26957 | 46820* | 59832 |

*Hex Nut For Mono Die Heads

815A Self-Opening Through-Head Oiling Die Head



21

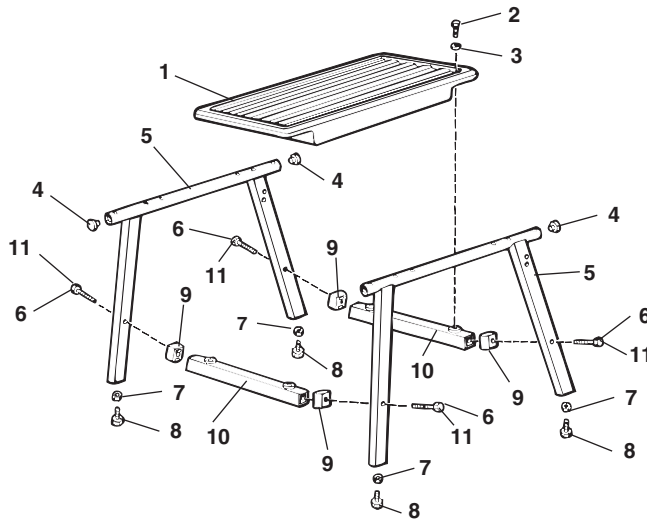


**NOTE: Order parts by Catalog Number only.
DO NOT order by Reference Number.**

| Ref. No. | Catalog No. | Description | Ref. No. | Catalog No. | Description |
|----------|-------------|---------------------------------------------------------|----------|-------------|-----------------------------|
| — | 97075 | 815A Self-Opening (Through-Head-Oiling) Die Head (NPT) | 13 | 59832 | Post |
| | 97080 | 815A Self-Opening (Through-Head-Oiling) Die Head (BSPT) | 14 | 44235 | Lock Screw |
| 1 | 44240 | Bushing | 15 | 32205 | Screw (4) |
| 2 | 43830 | Throw-Out Lever | 16 | 45050 | Pin |
| 3 | 44265 | Throw-Out Link | 17 | 97020 | Retaining Ring |
| 4 | 44245 | Washer | 18 | 40942 | Cam Plate (815A NPT) |
| 5 | 44260 | Clamp Lever | | 97040 | Cam Plate (815A BSPT) |
| 6 | 44270 | Roll Pin (2) | 19 | 40932 | Head w/Post |
| 7 | 45055 | Insert | 20 | 44285 | Trigger Assembly |
| 8 | 44250 | Nut | | 32982 | Adj. Trigger Assy. (Europe) |
| 9 | 44255 | Retaining Ring | | 45327 | Trigger Assy. (Europe) |
| 10 | 44275 | Throw-Out Plunger | 21 | 45332 | Gauge Plate Assy. |
| 11 | 11565 | Spring | 22 | 46722 | Adj. Lock Screw |
| 12 | 44290 | Trigger Screw | 23 | 46717 | Gauge Plate |
| | | | 24 | 47147 | Buttonhead Screw |

NOTE: Early Style 815/845 parts interchangeable with 815A NPT
Early Style 855 parts interchangeable with 815A BSPT

No. 100A Leg and Tray Stand

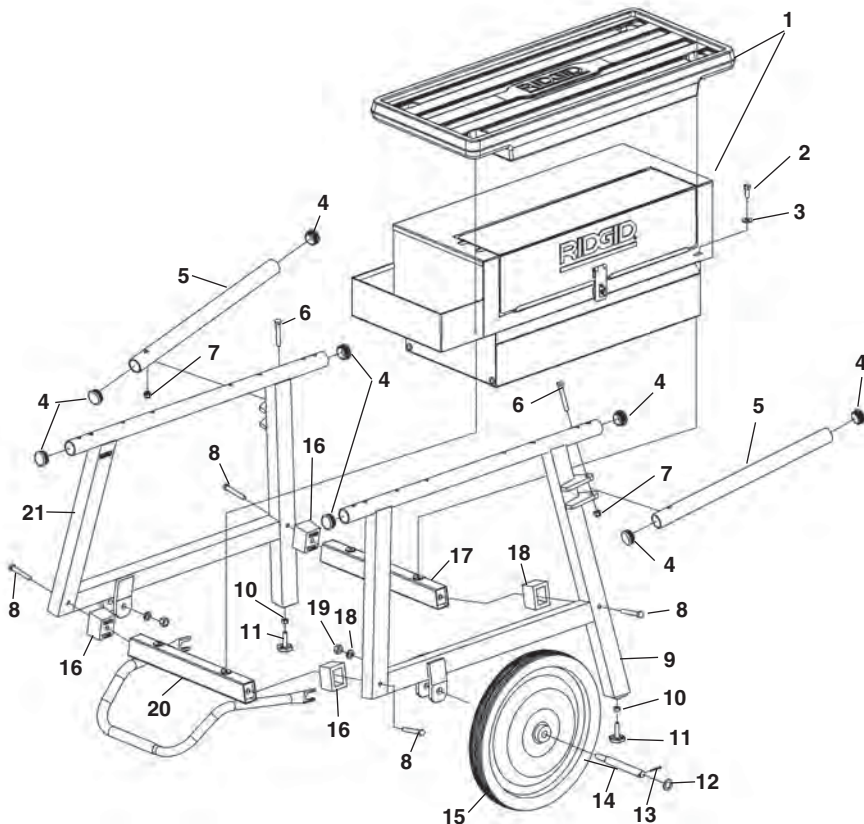


NOTE: Order parts by Catalog Number only. DO NOT order by Reference Number.

| Ref. No. | Catalog No. | Description |
|----------|-------------|---------------------------------------------------------------|
| — | 92457 | Leg Stand Assembly |
| 1 | 56872 | Tray |
| 2 | 80030 | Hex Bolt 3/8" - 16 x 1" (4) |
| 3 | 44230 | Flat Washer 3/8" (4) |
| 4 | 58037 | End Cap (4) |
| 5 | 58022 | Leg (2) |
| 6 | 58052 | Hex Bolt 3/8" - 16 x 2 1/2" (4) |
| 7 | 44225 | Hex Nut 3/8" - 16 (4) |
| 8 | 58027 | Leveling Pad (4) |
| 9 | 58042 | Spacer (4) - (1224 Machine Only) |
| 10 | 58032 | Cross Member (2) |
| 11 | 58047 | Hex Bolt 3/8" - 16 x 4" (4) (1224 & 535 Auto Machine Only) |

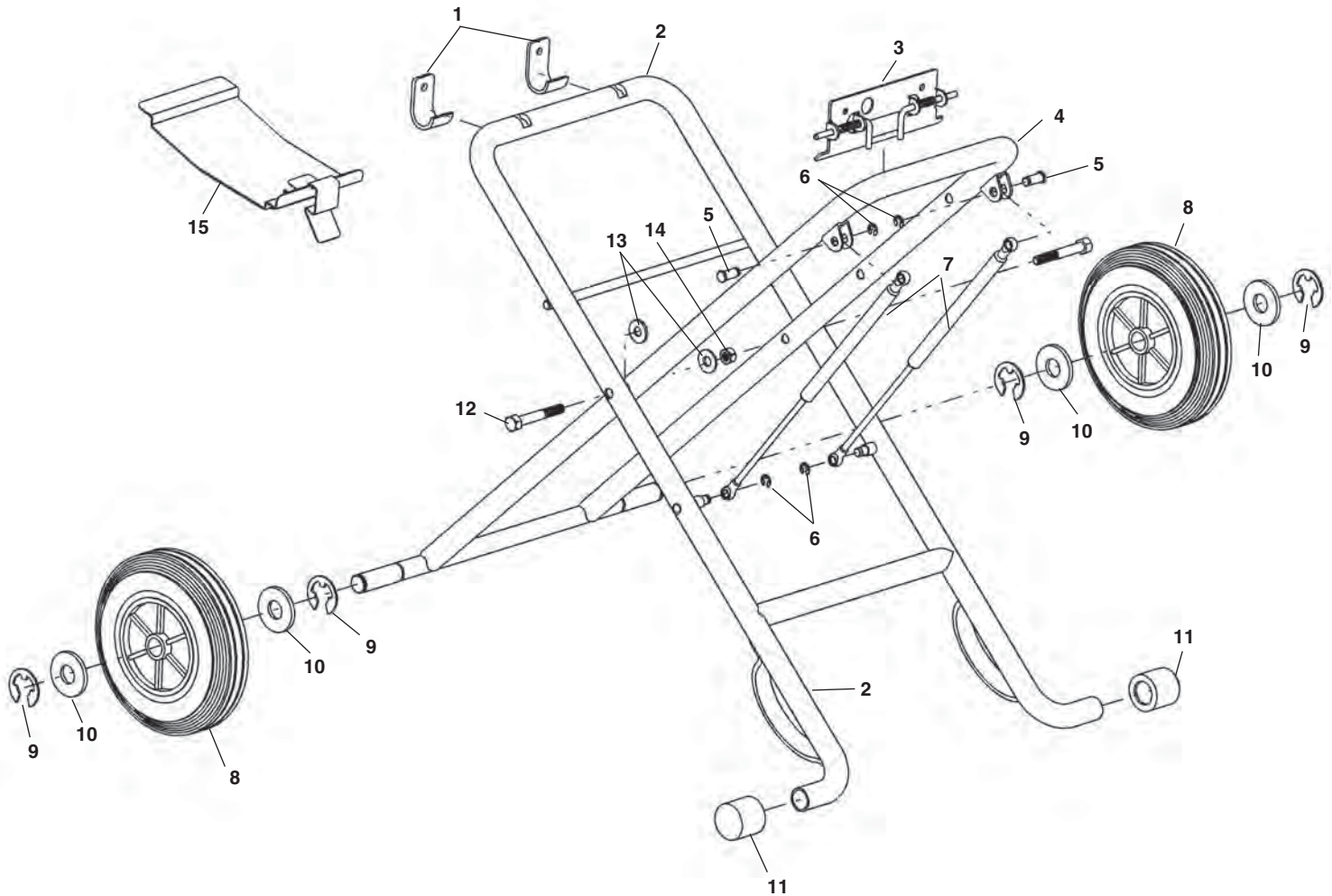
NOTE: 3/8" - 16 x 4" Bolts and spacers used when mounting 1224 & 535 Auto machines.

No. 150A/200A Wheel and Tray Stands



| Ref. No. | Catalog No. | Description |
|----------|-------------|--------------------------------------------------------------------|
| — | 92462 | 150A Wheel and Tray Assembly |
| — | 92467 | 200A Wheel and Cabinet Assembly |
| 1 | 56872 | Tray |
| | 22563 | Cabinet |
| 2 | 80030 | Hex Bolt 3/8" - 16 x 1" (4) |
| 3 | 44230 | Flat Washer (4) |
| 4 | 58037 | End Cap (6) |
| 5 | 58067 | Handle (2) includes Ref. No. 6 |
| | 34843 | Handle - Type 2 (2) |
| 6 | 46675 | Hex Bolt 3/8" - 16 x 2 3/4" (2) |
| 7 | 79985 | Locknut 3/8" - 16 (2) |
| 8 | 58052 | Hex Bolt 3/8" - 16 x 2 1/2" (4) |
| | 58047 | Hex Bolt 3/8" - 16 x 4" (4) (1224 & 535 Automatic Machine Only) |
| 9 | 26788 | Front Leg |
| 10 | 44225 | Hex Nut 3/8" - 16 (4) |
| 11 | 58027 | Leveling Pad |
| 12 | 47180 | Washer (2) |
| 13 | 47030 | Cotter Pin (2) |
| 14 | 58072 | Axle (2) |
| 15 | 27442 | Wheel (2) |
| 16 | 58042 | Spacer (4) (1224 & 535 Automatic Machines Only) |
| 17 | 58032 | Front Cross Member |
| 18 | 84150 | Lock Washer 1/2" (2) |
| 19 | 44745 | Locknut 1/2" (2) |
| 20 | 26798 | Rear Cross Member w/Stand Stop Assembly |
| 21 | 26793 | Rear Leg |

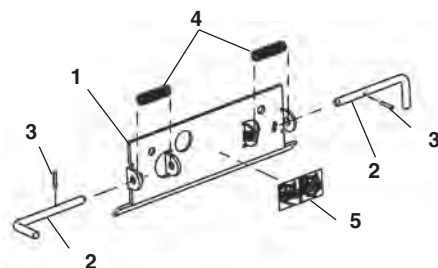
NOTE: 3/8" - 16 x 4" bolts and spacers used when mounting 1224 & 535 Auto machines.



**NOTE: Order parts by Catalog Number only.
DO NOT order by Reference Number.**

| Ref. No. | Catalog No. | Description | Ref. No. | Catalog No. | Description |
|----------|-------------|------------------------------------|----------|-------------|-----------------------------------------|
| — | 58077 | 250 Folding Stand | 7 | 48126 | Gas Strut (2) |
| — | 67657 | 250 Folding Stand (North America) | 8 | 43846 | Wheel (2) |
| 1 | 43796 | Rear Bracket (2) | 9 | 43856 | Retaining Ring (4) |
| 2 | 43866 | Outer Leg Assembly | 10 | 43936 | Washer (4) |
| | 70812 | Outer Leg Assembly (North America) | 11 | 23607 | End Cap (2) |
| 3 | 70817 | Front Bracket Assembly | 12 | 43836 | Bolt (2) |
| 4 | 43906 | Inner Leg Assembly | 13 | 43886 | Washer (4) |
| 5 | 43946 | Pin (2) | 14 | 43896 | Locking Nut M12 (2) |
| 6 | 48146 | Retaining Ring (4) | 15 | 67787 | Pressure Plate Assembly (North America) |

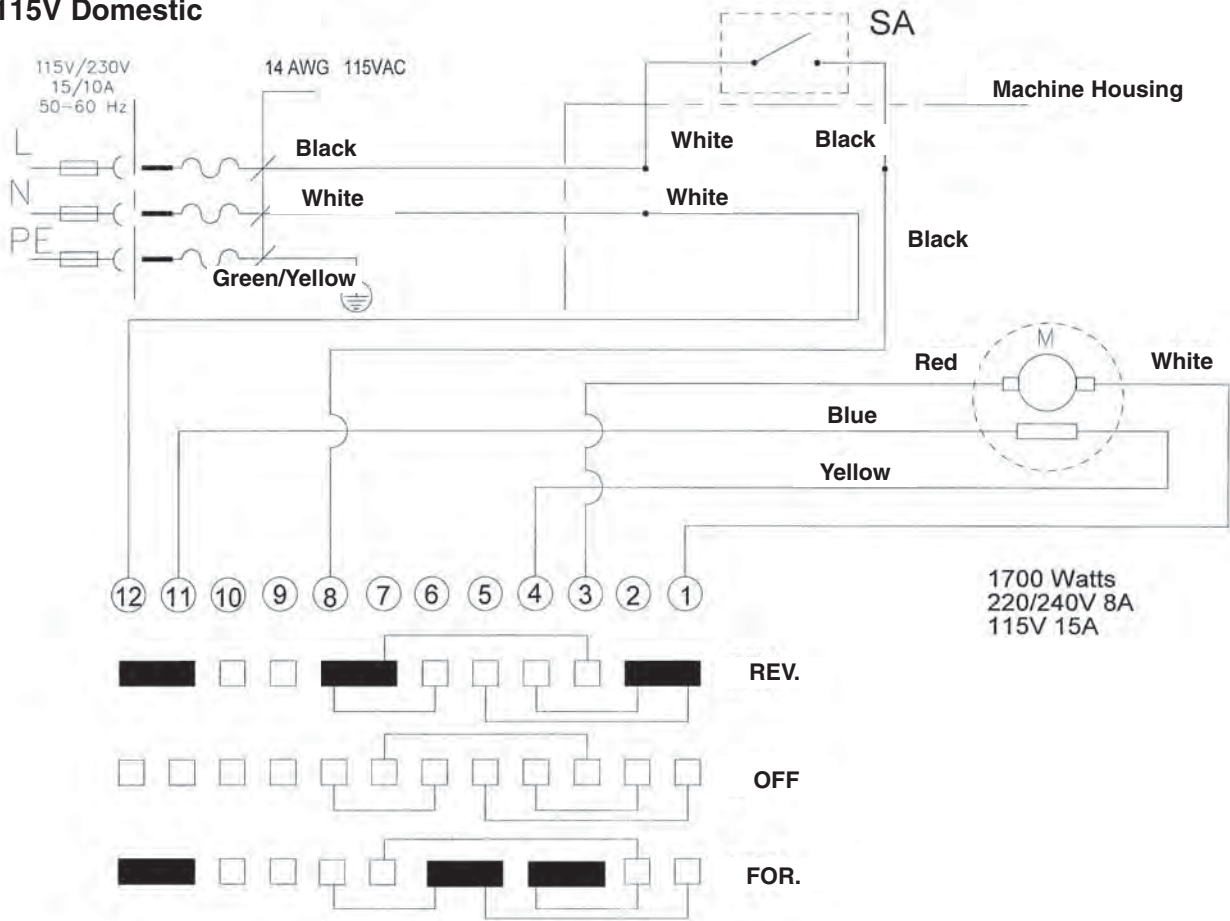
Front Bracket Assembly



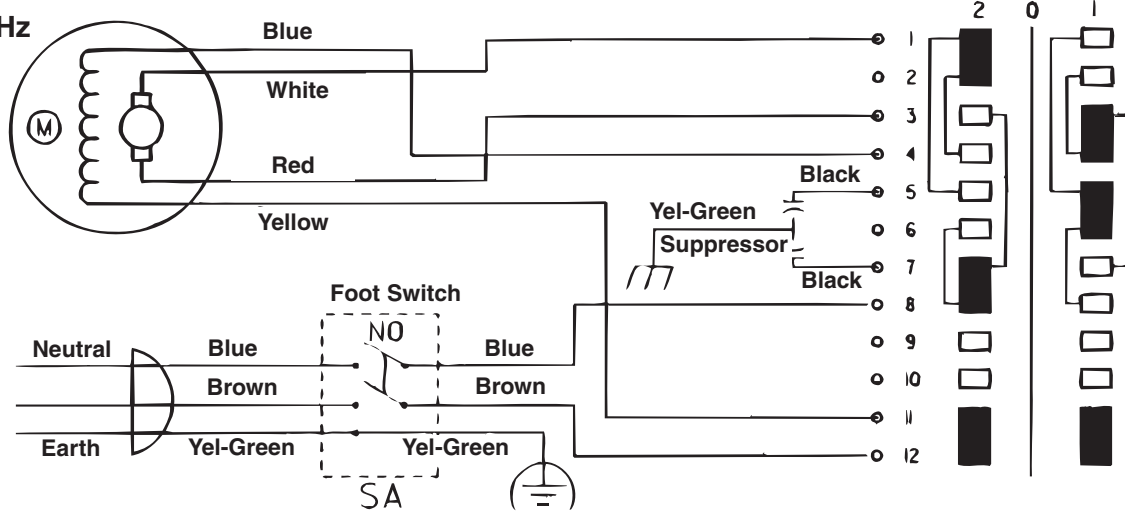
| Ref. No. | Catalog No. | Description |
|----------|-------------|------------------------|
| — | 70817 | Front Bracket Assembly |
| 1 | 43806 | Front Bracket |
| 2 | 43816 | Latch Handle (2) |
| 3 | 43826 | Roll Pin (2) |
| 4 | 43926 | Spring (2) |
| 5 | 43916 | Warning Decal |

Wiring Diagrams

115V Domestic



115V/230V 25-60 Hz



115/230V Far East

