

# BRUSH CUTTERS

## V50 FLOATING DECK ROTARY BRUSH CUTTER

Available widths 60", 66", 72" & 78"

Cuts up to 4" diameter trees and floating deck provides a consistent cut on uneven terrain.



**FAT•N**

Char-Lynn

Do not operate rotary brush cutter without a shatterproof cab door on loader.

**4.0"**  
CUT CAPACITY

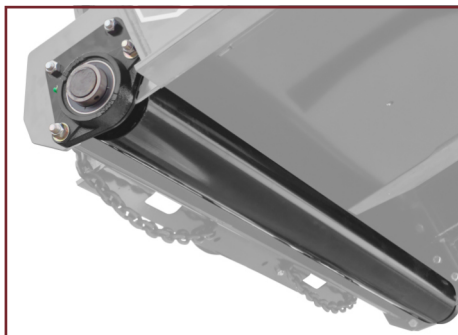
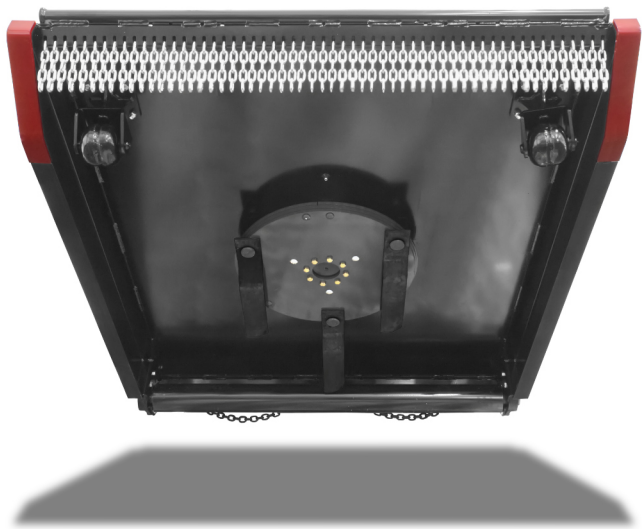
**60" - 78"**  
FOUR  
CUT WIDTHS

**14-42 GPM**  
FOUR MOTOR OPTIONS  
STANDARD & HIGH FLOW

UP TO **225LB**  
FLYWHEEL  
WEIGHT

UP TO **1830LB**  
OVERALL WEIGHT

DETAIL UNDER DECK



**OPTION: REAR ROLLER**  
Compacts chopped material and produces a better cut by limiting gouging and scalping.



**OPTION: SWIVEL CASTERS**  
360° rotating swivel casters produce a better cut by creating a smoother ride and limiting gouging and scalping.

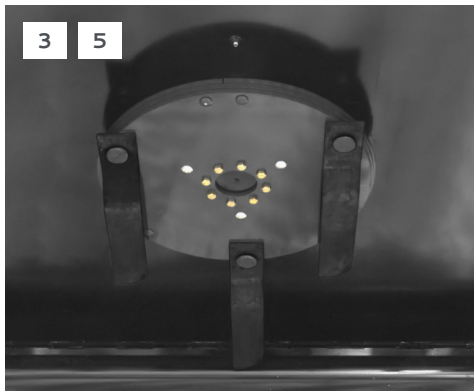
# BRUSH CUTTERS



**1. FLOATING DECK FOLLOWS THE CONTOUR OF THE GROUND**

**2. DIRECT DRIVE EATON® MOTOR WITH RELIEF VALVES**

**3. HYDRAULIC BRAKING STOPS FLYWHEEL WITHIN 10 SECONDS**

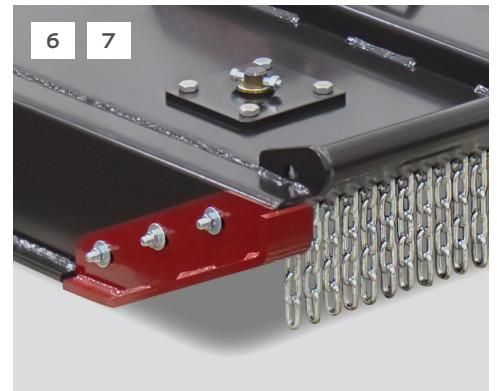


**4. STANDARD MOTOR GUARD & SPINDLE GUARD**

**5. CIRCULAR FLYWHEEL WITH 3 UPDRAFT BLADES BOUNCES OFF STUMPS**

**6. CHAIN CURTAIN PREVENTS FLYING DEBRIS**

**7. REPLACEABLE FRONT SKID SHOES**



MODEL	RBV60-F	RBV66-F	RBV72-F	RBV78-F
Cut Width (Inches)	60.0	66.0	72.0	78.0
Overall Width (Inches)	66.0	72.0	78.0	84.0
Overall Height (Inches)	20.9			
Overall Depth (Inches)	81.8	87.8	93.8	99.8
Deck Height (Inches)	8.8			
Minimum Cut Height (Inches)	1.8			
Vertical Deck Travel (Inches)	4.625			
Cutting Capacity, Diameter (Inches)	4.0			
Deck Thickness: Top / Side (Inches)	0.25 / 0.25*			
Recommended Flow Rate (GPM)	14 – 25 Standard Flow, 25 – 42 High Flow			
Approximate Weight (Pounds)	1430**	1560**	1680**	1760**
Recommended Loader Capacity	Greater than 1500 Pounds			

\*Material is Grade 50 Plate (50,000 PSI Minimum Yield Strength).

\*\*High Flow Motor Options Add Approximately 70 Pounds to Model Weight.