



[Click Here To View  
Item at  
www.GapPower.com](http://www.GapPower.com)

*Sales • Rentals  
Parts & Service*

# C24HD & C24HDS Broadcast Spreader Assembly and Operating Instructions

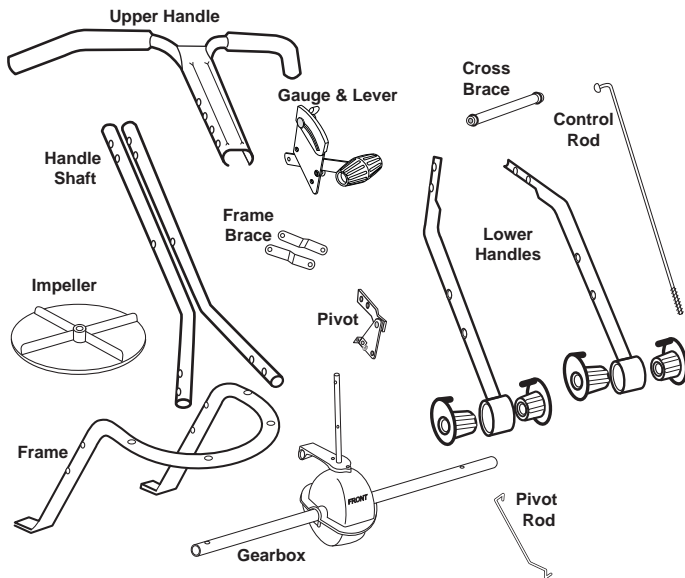
**EarthWay®**  
EV-N-SPRED

**PLEASE CONTACT US: IF YOU ARE MISSING ANY PARTS, HAVE ANY DIFFICULTY IN ASSEMBLY, OR HAVE ANY QUESTIONS REGARDING THE SAFE OPERATION OF THIS SPREADER. THIS MODEL INCLUDES LIFETIME TECHNICAL SUPPORT. SUPPORT HOT LINE: 574-848-7491 or 800-294-0671, email: techsupport@earthway.com**

## HELPFUL HINTS:

- ☑ If your spreader does not spread evenly, be sure the FRONT on the gear box points to the front of the spreader. The impeller must turn clockwise. Reversing the gearbox will cause the impeller to turn counter clockwise. Clean the impeller after each use as some fertilizer may become stuck on the impeller blades and will cause uneven spreading.
- ☑ Your spreader is designed to be pushed at three miles per hour, which is a brisk walking speed. Slower or faster speeds will change the spread patterns. Wet fertilizer will also change the spread pattern and flow rate.
- ☑ Clean and dry your spreader thoroughly after each use, wash between the shut-off plate and bottom of the hopper regularly. To prevent rust, coat all metal parts (inside and out) including the frame tubes with a light oil or silicon spray.
- ☑ Gears are permanently lubricated at the factory. Do not open the gearbox or dirt may enter.
- ☑ If you use **Rock Salt** remove the agitator to prevent damage to the gearbox and remove salt from the hopper daily. **Rock Salt** will reconstitute back into a solid block if left in the hopper overnight and will damage your gearbox if pushed with the block in place.

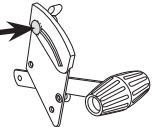
## IF YOUR SPREADER COMES SEMI ASSEMBLED, SKIP TO STEP #7



1. Remove and identify all of the loose parts from carton.

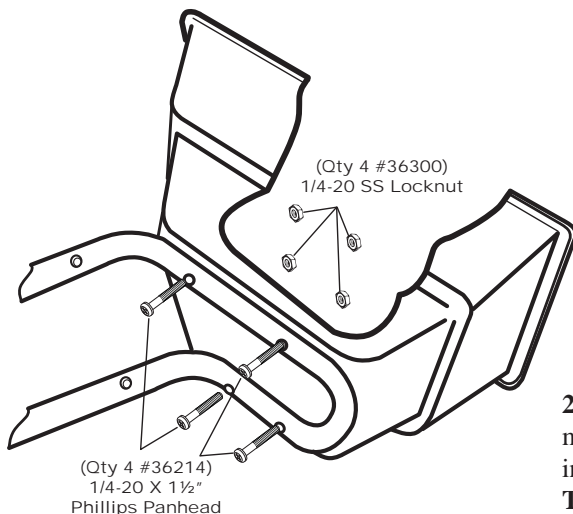
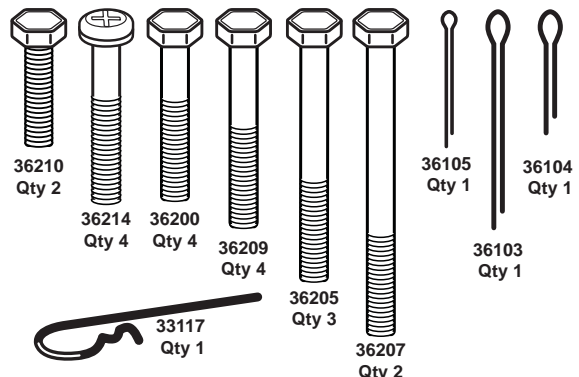
**WARNING**  
DO NOT USE AIR TOOLS TO ASSEMBLE. TO PREVENT SEIZING SPRAY ALL NUTS & BOLTS WITH FURNITURE POLISH OR WAX

Gauge Overlay is snapped over the metal gauge. Replace the stop bolt assembly to secure overlay on the gauge.



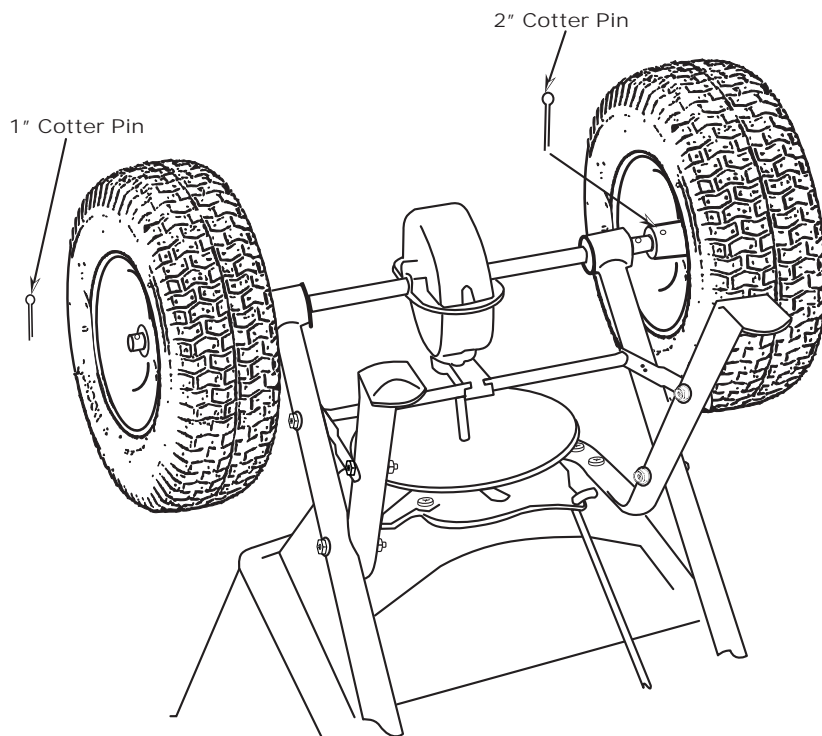
**ROCK SALT AND POWDERED MATERIALS SHOULD NOT BE USED IN THIS SPREADER AS IT WILL DAMAGE GEARBOX AND CAN VOID WARRANTY. USE ONLY GRANULAR MATERIALS.**

36305 Qty 2 36300 Qty 17 36404 Qty 18



2. Position hopper on side. Install frame using (4) 1/4-20 x 1 1/2" Pan Head Phillips machine screws and (4) 1/4-20 nylon insert locknuts. First put bolts through holes in frame then through holes in bottom of hopper. Secure with locknuts. **TIGHTEN THESE LOCKNUTS NOW.**





7. Install drive wheel to axle using pin hole nearest to lower handles as shown. Insert 2" cotter pin through wheel and through axle. Bend with pliers to prevent pin from falling out.

#### NEXT

Install coast wheel to axle, and then using outside pin hole on the axle (as shown on the left), insert 1" cotter pin through axle [*NOTE: not thru the wheel*]. Bend with pliers to prevent pin from falling out.

#### TURN SPREADER UPRIGHT ON TO WHEELS

**If you have any questions  
please call 574-848-7491**

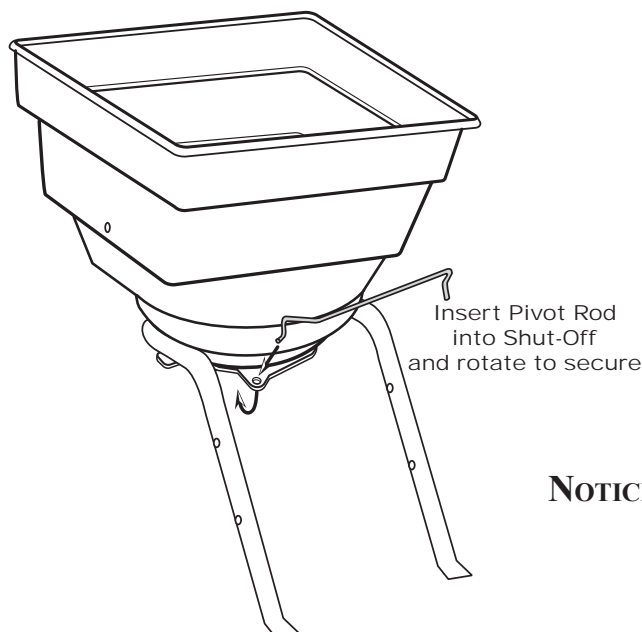
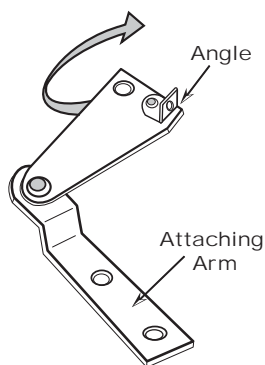
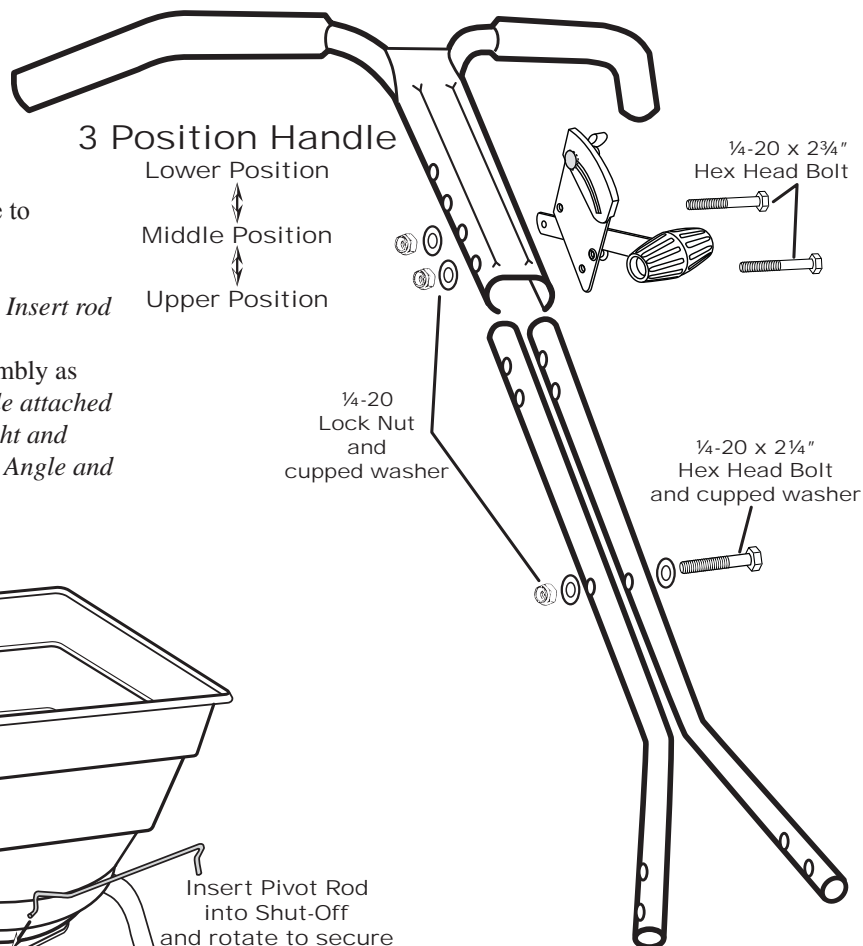
#### 8. NOTE: BEFORE INSTALLING THE GAUGE & LEVER ASSEMBLY AND UPPER HANDLE TO THE HANDLE SHAFT, SELECT THE BEST POSITION FOR THE OPERATOR'S COMFORT.

You can select lower, middle, or upper positions for best fit to the operator's height. Insert 2 3/4" bolt through the Gauge, then upper handle and finally through handle shaft. See example to the right.

#### DO NOT TIGHTEN LOCKNUT YET.

9. Insert pivot rod into shut off plate as shown below. [*TIP: Insert rod end from the top, then push down & turn to lock in place.*]

10. Insert other end of pivot rod into pivot and bracket assembly as shown. [*TIP: Insert rod end from the side that has the angle attached to the bracket, then turn to lock in place as shown at the right and above. The correct positioning of the Pivot Bracket has the Angle and Attaching Arm facing away from the gearbox.*]



**NOTICE CUPPED WASHER LOCATIONS**

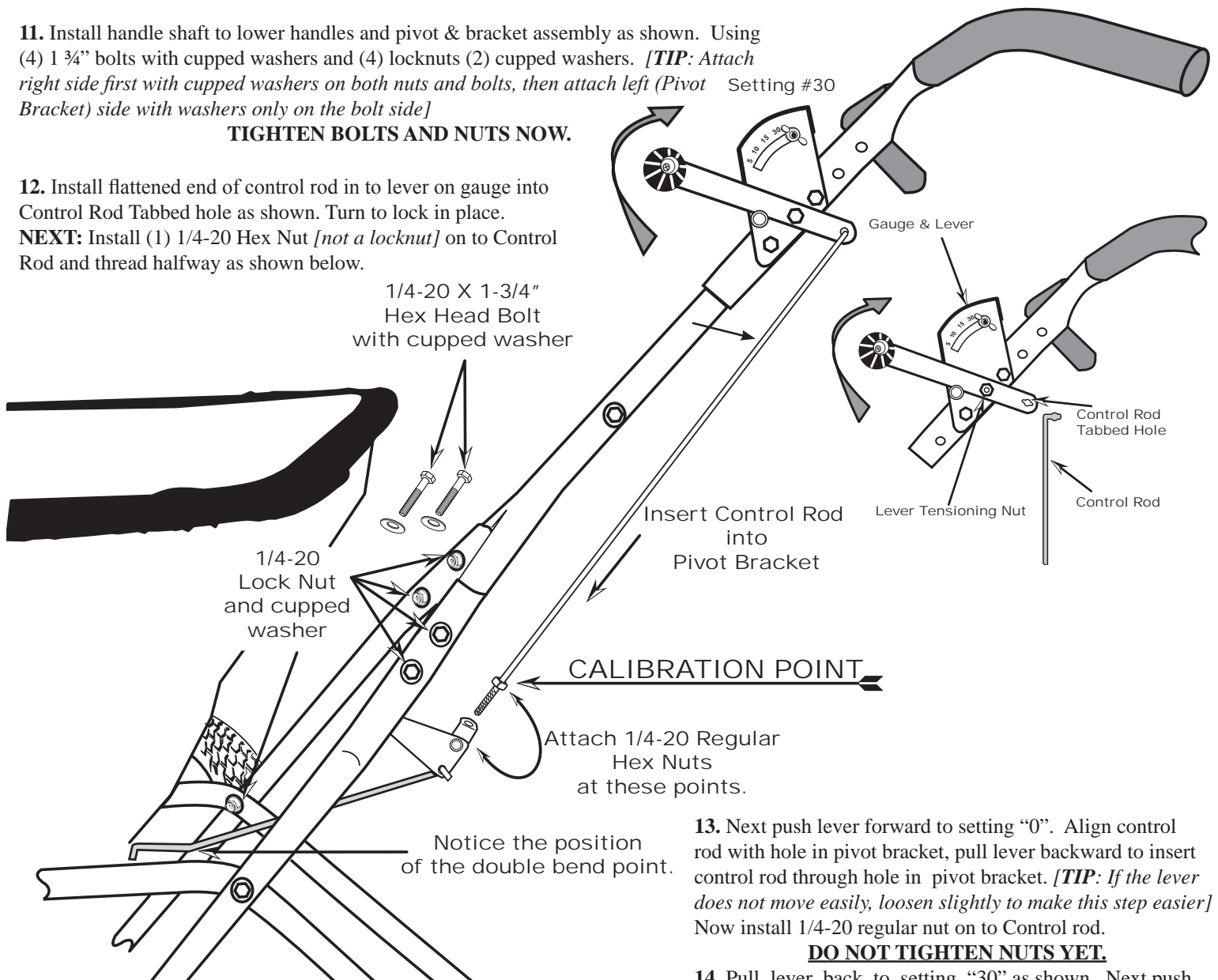


**11.** Install handle shaft to lower handles and pivot & bracket assembly as shown. Using (4) 1 3/4" bolts with cupped washers and (4) locknuts (2) cupped washers. *[TIP: Attach right side first with cupped washers on both nuts and bolts, then attach left (Pivot Bracket) side with washers only on the bolt side]*

**TIGHTEN BOLTS AND NUTS NOW.**

**12.** Install flattened end of control rod in to lever on gauge into Control Rod Tabbed hole as shown. Turn to lock in place.

**NEXT:** Install (1) 1/4-20 Hex Nut [not a locknut] on to Control Rod and thread halfway as shown below.



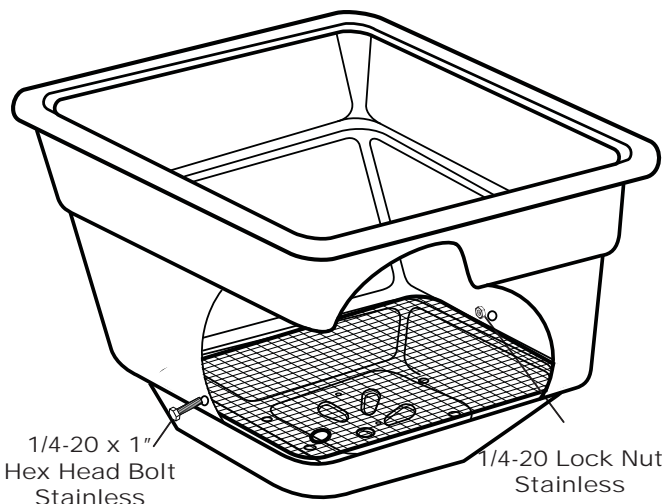
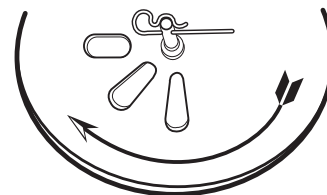
**NOTICE CUPPED WASHER LOCATIONS**

**13.** Next push lever forward to setting "0". Align control rod with hole in pivot bracket, pull lever backward to insert control rod through hole in pivot bracket. *[TIP: If the lever does not move easily, loosen slightly to make this step easier]* Now install 1/4-20 regular nut on to Control rod.

**DO NOT TIGHTEN NUTS YET.**

**14.** Pull lever back to setting "30" as shown. Next push pivot & bracket forward so that the shut off plate in the hopper is in the full open position. **[NOTE: THE SETTING OF "30" ON THE GAUGE & LEVER ASSEMBLY MUST OPEN THE SHUT-OFF COMPLETELY FOR PROPER CALIBRATION.]** Now tighten the nuts against the pivot bracket to prevent change in calibration. Test by opening and closing the Gauge & Lever a few times to ensure an accurate calibration.

**15.** Tension on the flow control lever may be adjusted by tightening or loosening the tension nut as shown above.

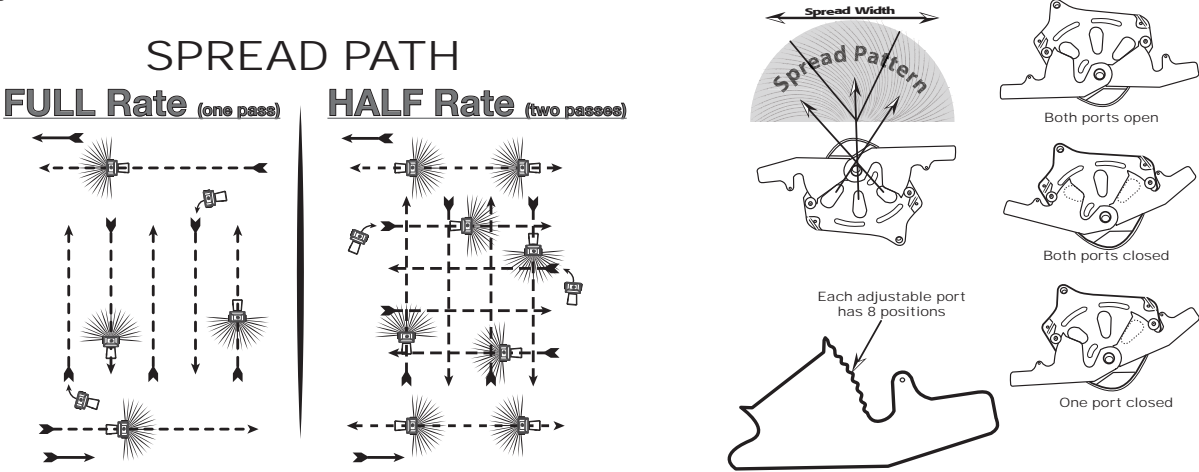


**16.** Install the two 1/4-20 x 1" Stainless Steel bolts into holes located on each side of the hopper and secure with 1/4-20 lock-nut. Next slide Debris Screen under the two bolts inside the hopper.

**17.** Insert Agitator to pinion shaft on inside of hopper. **NOTE:** Position of flat side of agitator. This pin should be installed as shown above.

18. For normal operation both doors should be fully opened. To reduce flow to the left side, partially or completely close the door over the rear (**LARGE**) hole. To reduce flow to the right side, partially or completely close the door over the front (**SMALL**) hole. Close both doors for a narrow center spread pattern.

**WARNING:** If the optional side deflector is being used in the down position, the plate over the rear (**LARGE**) hole **MUST BE CLOSED** or an over application of material will occur.



The settings furnished on the Setting Matrix are intended as a guide only. Variations in physical characteristics of material applied, walking speed, and roughness of ground surface may require slightly different spreader settings. Due to these conditions, Earthway Products, Inc. makes no warranty as to the uniformity of coverage actually obtained from the settings listed.

**5-YEAR LIMITED WARRANTY**

Earthway Products, Inc. warrants this product free of defects in original workmanship and materials for a period of 5-Years to the end user with the original purchase receipt. If a manufacturing non-conformance is found, Earthway Products, Inc. at its discretion will repair or replace the part(s) or product at no charge provided the failure is not the result of incorrect installation, mishandling, misuse, tampering, or normal wear and tear as determined by Earthway. Earthway at its discretion may require that the part(s) or product be returned along with the original purchase receipt at owners' expense for examination and compliance with the terms of this warranty. Do not return any product without first receiving authorization from Earthway Products, Inc. To seek remedy under this warranty, contact Earthway Products, Inc. at 574-848-7491, techsupport@earthway.com or write to Earthway Products, Inc. P.O. Box 547 Bristol, Indiana 46507 and describe the nature of the manufacturing defect. **SPECIFIC LIMITATIONS:** This warranty covers only the part(s) or product; any labor charges associated with repair or replacement of non-conformances are specifically excluded. Due to the corrosive nature of most fertilizers and ice melt products, Earthway Products, Inc. makes no warranty against and specifically excludes part(s) or product degradation or failure due to corrosion or its effects. Clean and dry your spreader thoroughly after each use, as a preventative measure, coat all metal parts with a light oil or silicon spray.

**OPERATING INSTRUCTIONS**

- Before filling hopper, become familiar with the operation of this spreader.
- ✓ Obtain proper setting for material to be used from the enclosed SETTING MATRIX included with this spreader, or from our web site under the MANUALS SECTION.
  - ✓ Move stop bolt on rate gauge assembly to the proper setting.
  - ✓ While pushing spreader forward, pull control lever back to stop bolt.
  - ✓ To stop, push lever forward to close flow holes before you stop moving.
  - ✓ When finished, empty any remaining material from hopper.
  - ✓ Thoroughly wash spreader and allow to dry before storing. Apply coating of light oil to help prevent corrosion.
  - ✓ If you use Rock Salt, **remove agitator** when using Rock Salt to prevent damage to the gearbox.

Earthway Products, Inc.  
1009 Maple Street, PO Box 547  
Bristol, IN 46507

For Your Records

Date Purchased

Place of Purchase

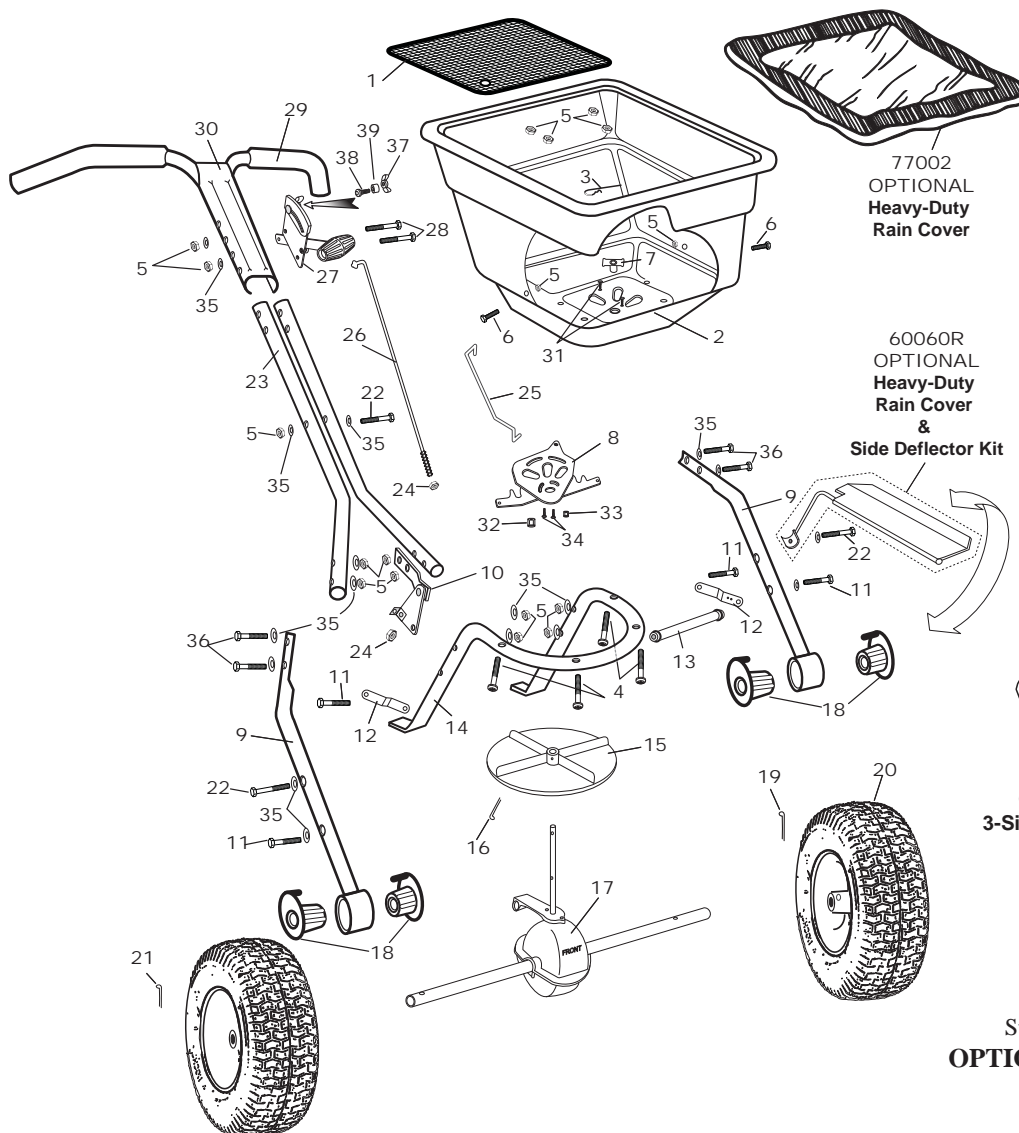
**HOW TO ORDER SPARE PARTS**

All spare parts listed may be ordered direct from  
EarthWay Products, Inc.

Be sure to give the following information when ordering.

**Model Number**  
**Part Number**  
**Part Description**

Call (574) 848-7491, 800-294-0671, or email: parts@earthway.com  
for current prices.



Earthway Products, Inc.  
P.O. Box 547  
Bristol, Indiana 46507  
(574) 848-7491

Standard Settings (12196) Gauge Overlay and  
**OPTIONAL** Lesco Settings (12195) Gauge Overlay

## C24HD & C24HDS PROFESSIONAL BROADCAST SPREADER

Key #	Part #	Description	Key #	Part #	Description
1	40003	SQUARE SCREEN	21	36104	3/16 X 1" COTTER PIN S.S.
2	60219	HOPPER ASSEMBLY	22	36205	1/4-20 X 2 1/4" HHCS S.S.
3	33117	AGITATOR	23	24301	HANDLE SHAFTS WELDED (C24HDS)
4	36214	1/4-20 X 1 1/2" PHPMS S.S.	23	25301	HANDLE SHAFT (C24HD)
5	36300	1/4-20 NYLON INSERT LOCKNUT S.S.	24	36305	1/4-20 HEX NUT STAINLESS STEEL
6	36210	1/4-20 X 1" HHMS S.S.	25	44251	PIVOT ROD
7	12209	HOPPER BUSHING (C24/C25)	26	42256	CONTROL ROD
8	12278	SHUT OFF PLATE ASSEMBLY - COMMERCIAL	27	60298	GAUGE & LEVER ASSEMBLY
9	24202	LOWER HANDLE (C24HDS) COMPLETE	28	36207	1/4-20 X 2 3/4" HHCS S.S.
9	25202	LOWER HANDLE COMPLETE (C24HD)	29	12273	GRIP 9.75" LONG
10	60299	PIVOT & BRACKET ASSEMBLY	30	60069	UPPER HANDLE ASSEMBLY W/GRIPS C-SERIES PAINTED
11	36200	1/4-20 X 1 1/2" HHCS S.S.	30	60070	UPPER HANDLE ASSEMBLY W/GRIPS C-SERIES STAINLESS
12	42237	FRAME BRACE	31	36208	#6 X 3/8" TYPE 25 PHPS S.S.
13	24704	CROSS BRACE (11.125")	32	11927	SHUTOFF SUPPORT- LARGE
14	24100	FRAME (C24HDS)	33	11926	SHUTOFF SUPPORT- SMALL
14	25102	FRAME PAINTED (C24HD)	34	31138	#8 X 3/8" PMT #8 HD COARSE BLACK
15	12109	IMPELLER (9" DIA)	35	36404	1/4 CUPPED WASHER S.S.
16	36105	1/8" X 1 1/4" COTTER PIN S.S.	36	36209	1/4-20 X 1 3/4" HHCS S.S.
17	60334	GEAR BOX & AXLE ASSEMBLY	37	60027	WING NUT ASSEMBLY BLACK
18	12352	BEARING (COMMERCIAL)	38	37100	1/4-20 X 1" CARRIAGE BOLT ZINC
19	36103	3/16 X 2" COTTER PIN S.S.	39	12147	SPACER (PIVOT LINK)
20	19117	13" DIA PNEU TIRE DRIVE			

# Broadcast Setting Matrix

## EV-N-SPRED® Calibration Techniques

### How to ensure your spreader is properly calibrated

Make sure the drop holes in the bottom of the hopper are fully open when the Rate Control handle is on #30. If not, please adjust control cable or control rod to allow for a full open hopper position at #30.

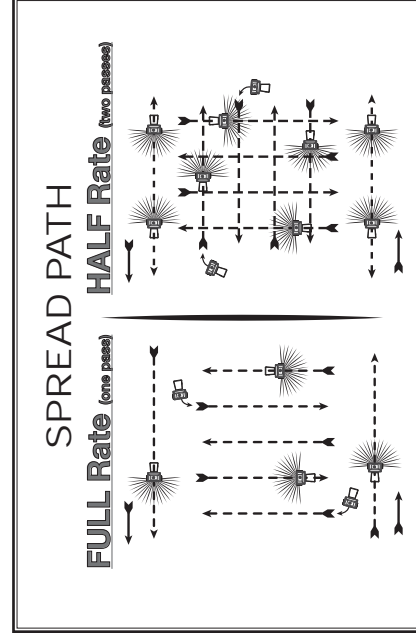
#### Rod Type Adjustment

1. Open the shut-off so that the drop holes are completely open as illustrated to the right.
2. Review the Control Lever position - if it is set so that the forward edge is at #30, you are calibrated. If not you need to adjust the control rod at the pivot bracket shown in Fig 1.
  - A. If your shut-off is not able to open fully as in step #1. Loosen the top nut a few turns, then loosen the lower nut so that it allows you to push the shut-off open fully. Next tighten each nut so that they contact the pivot bracket without moving it, and then carefully tighten each nut fully so they do not loosen during use. Recheck adjustment as outlined in #1 above.
  - B. If your shut-off is able to open fully as in step #1, but the Control Lever is not at #30. Loosen the top nut a few turns, then loosen the lower nut so that it allows you to push the Control Lever to #30. Next tighten each nut so that they contact the pivot bracket without moving it. Carefully tighten each nut fully so they do not loosen during use. Recheck adjust as outlined in #1 above.

#### Cable Type Adjustment

1. Open the Control Lever so that the shut-off and drop holes are completely open as illustrated above right.
2. Review the Control Lever position so that the indicator is pointed to #30, if it is your calibration is correct. If not you need to adjust the control cable at the cable clamp on the underside of the hopper as shown in Fig 2.
  - A. If your shut-off is not able to open fully as in step #1. Loosen the cable clamp screw slightly so that you can slide the outer cable out so that the shut-off is fully open. Next tighten the cable clamp screw securely. Recheck adjustment as outlined in #1 above.
  - B. If your shut-off is able to open fully as in step #1, but the Control Lever is not at #30. Loosen the cable clamp screw slightly so that you can slide the outer cable in so that the Control Lever opens to #30. Next tighten the cable clamp screw securely. Recheck adjustment as outlined in #1 above.

If you have any questions regarding the operation or assembly of your spreader please call us at 800-294-0671 or 574-848-7491 Monday - Friday 9:00am - 4:00pm Eastern. **Accessories and Repair Parts** are also available at these numbers.



Drop holes shown fully open.

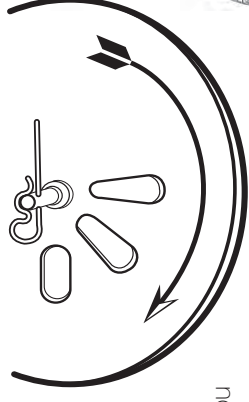


Fig 1

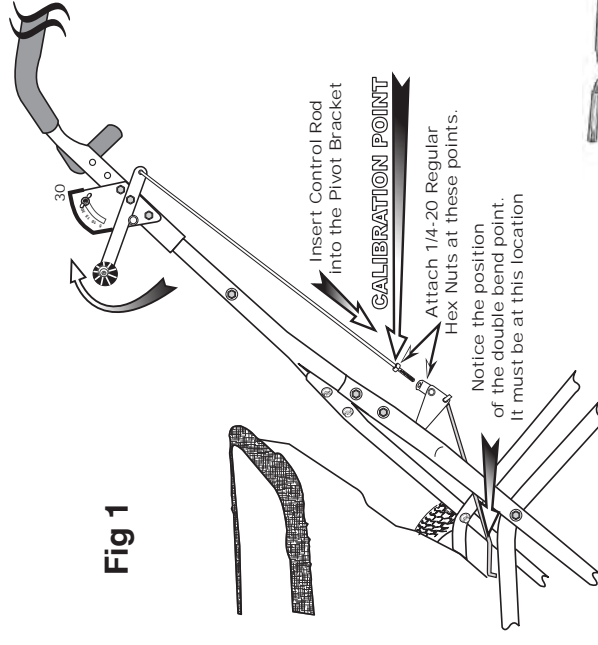
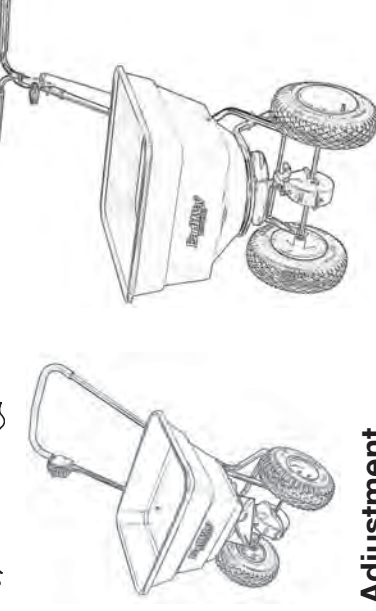


Fig 2



#### Cable Type Adjustment

Loosen/tighten screw on cable clamp then slide outer cable in/out for calibration



ESTABLISHING A SETTING RATE

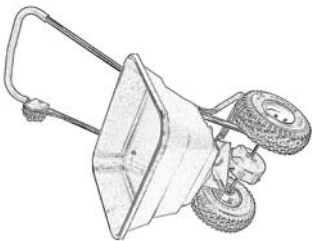
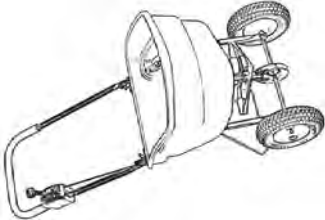
Step 1: Use Chart 1 to estimate the number of LBS/1,000 square feet of coverage (Example: 20 LB bag with 10,000 square foot coverage = 2.0 LBS/1,000 square feet)

Step 2: Find the closest LBS/1,000 square feet in Chart 2 that you estimated using Chart 1 (Example: 2.0 LBS/1,000 square feet = Spreader Setting of 13)

CHART 1		BAG COVERAGE IN SQUARE FEET		
		5,000	10,000	15,000
BAG WEIGHT	5 LBS.	1.0	0.5	0.3
	10 LBS.	2.0	1.0	0.7
	15 LBS.	3.0	1.5	1.0
	18 LBS.	3.6	1.8	1.2
	20 LBS.	4.0	2.0	1.3
	25 LBS.	5.0	2.5	1.7
	30 LBS.	6.0	3.0	2.0
	35 LBS.	7.0	3.5	2.3
	40 LBS.	8.0	4.0	2.7
	45 LBS.	9.0	4.5	3.0
	50 LBS.	10.0	5.0	3.3

CHART 2			
GRAMS/SQ METER	LBS./1,000 SQ FT	SPREADER SETTING	
5 Grams	1.0 LBS.	11	
10 Grams	2.0 LBS.	13	
15 Grams	3.0 LBS.	14	
20 Grams	4.0 LBS.	16	
25 Grams	5.0 LBS.	17	
30 Grams	6.0 LBS.	18	
35 Grams	7.0 LBS.	19	
40 Grams	8.0 LBS.	20	
45 Grams	9.0 LBS.	22	
50 Grams	10.0 LBS.	23	

GRASS SEED		
GRAMS/SQ METER	LBS/1,000 SQ FT	SPREADER SETTING
10 Grams	2 LBS.	13
15 Grams	3 LBS.	14
20 Grams	4 LBS.	16
25 Grams	5 LBS.	17



METRIC RATE SETTING

Determining a Setting Rate

Use chart below to determine the Setting Rate based on Grams/Square Meter of coverage as directed on the bag.

All spread widths are determined by the particle size and density.  
Below will give approximate spread widths.

SPREAD WIDTHS FOR DIFFERENT PARTICLE SIZES			
Particle Size		English	Metric
	Small/Fine (Sand)	5-7ft.	1.5-2.1m
	Medium (Half BB)	7-9ft.	2.1-2.7m
	Large (Full BB)	9-12ft.	2.7-3.7m

SPREAD WIDTH FOR DIFFERENT SIZE GRASS SEED			
Seed Size		English	Metric
	Fine	5-7ft.	1.5-2.1m
	Coarse	7-10ft.	2.1-3.1m

The settings furnished on the Rate Setting Matrix are intended as a guide only. Variations in physical characteristics of material applied, walking speed, and roughness of ground surface may require slightly different spreader settings. Due to the above conditions, EPI makes no warranty as to the uniformity of coverage actually obtained from the settings listed.